



# SZABO SCANDIC

Part of Europa Biosite

## Produktinformation



Forschungsprodukte & Biochemikalien



Zellkultur & Verbrauchsmaterial



Diagnostik & molekulare Diagnostik



Laborgeräte & Service

Weitere Information auf den folgenden Seiten!  
See the following pages for more information!



### Lieferung & Zahlungsart

siehe unsere [Liefer- und Versandbedingungen](#)

### Zuschläge

- Mindermengenzuschlag
- Trockeneiszuschlag
- Gefahrgutzuschlag
- Expressversand

### SZABO-SCANDIC HandelsgmbH

Quellenstraße 110, A-1100 Wien

T. +43(0)1 489 3961-0

F. +43(0)1 489 3961-7

[mail@szabo-scandic.com](mailto:mail@szabo-scandic.com)

[www.szabo-scandic.com](http://www.szabo-scandic.com)

[linkedin.com/company/szaboscandic](https://www.linkedin.com/company/szaboscandic) 

# Liquid Handling Control™ Software

Liquid Handling Control™ Software is a powerful yet flexible PC interface for users of BioTek's EL406™ Washer Dispenser, ELx405™ Microplate Washer and MultiFlo™ Dispenser, offering the convenience of assay-specific protocol definition in a Windows® environment. Any programming sequence which is possible onboard the supported instrument may be duplicated from the computer with LHC™ Software. Additionally, LHC allows an unlimited number of methods to be linked together for the most complex wash or dispense routines. From an instrument's first prime routine, multiple microplate processes over time, an ultrasonic cleaning to dissolve protein or salt crystal build-up, to a final system rinse, LHC enables unattended operation.

To meet the demands of the GxP laboratory, LHC Secure offers features to ensure compliance to the US FDA's 21 CFR Part 11 directive. Flexible multi-user permission levels and electronic protocol and system audit trail signing are all available for whenever additional security is required.



ELx405 Washer



EL406 Washer Dispenser



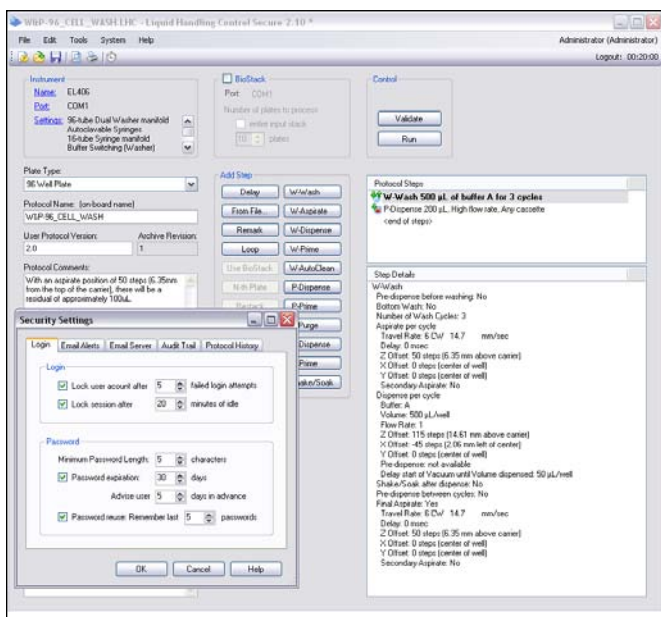
MultiFlo Dispenser



## Features:

- Intuitive StepWise™ protocol creation
- Dual mode control – run protocols from PC or download to instrument keypad
- Automatic validation for error-free assurance
- Printed protocol reports
- Customizable maintenance reminders
- Multiple instruments controlled in parallel
- 21 CFR Part 11 compliance
  - User permission levels and authentication
  - Time-stamped protocol and system audit trails
  - Embedded signatures
- Email alerts
- Automatic protocol history

## 21 CFR Part 11 Compliance:



LHC Secure offers laboratories the tools required to make their work with BioTek's EL406™ Washer Dispenser, ELx405™ Washer and MultiFlo™ Dispenser in compliance with the FDA's 21 CFR Part 11 directive.

## Versions:

- LHC2: Liquid Handling Control™ Software
- LHC2SECURE: Liquid Handling Control™ Secure – for 21 CFR Part 11 compliance or whenever additional security is required

## Minimum System Requirements:

- Microsoft® Windows® 7, Windows® Vista™, Windows® XP – Professional Editions, 32-bit Versions
- Intel® Pentium IV-Class or AMD compatible processor (1.33 GHz or higher)
- 512 MB RAM or higher
- 2 GB hard drive space or higher
- Designed for XGA resolution at 1024 x 768 or higher
- CD-ROM readable drive
- Keyboard and mouse
- Microsoft® Internet Explorer® v5.0 or higher (for online Help)
- Serial or USB port(s) for one or more BioTek instruments



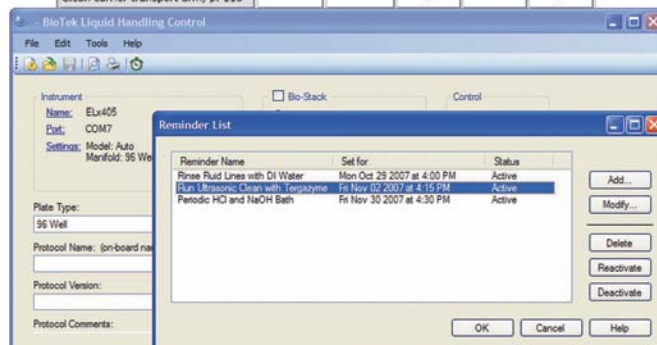
BioTek Instruments, Inc.  
Highland Park, P.O. Box 998  
Winooski, Vermont 05404-0998, USA

Tel: 802-655-4040 • Toll-Free: 888-451-5171  
Outside the USA: 802-655-4740 • Fax: 802-655-7941

## Custom Maintenance Reminders:

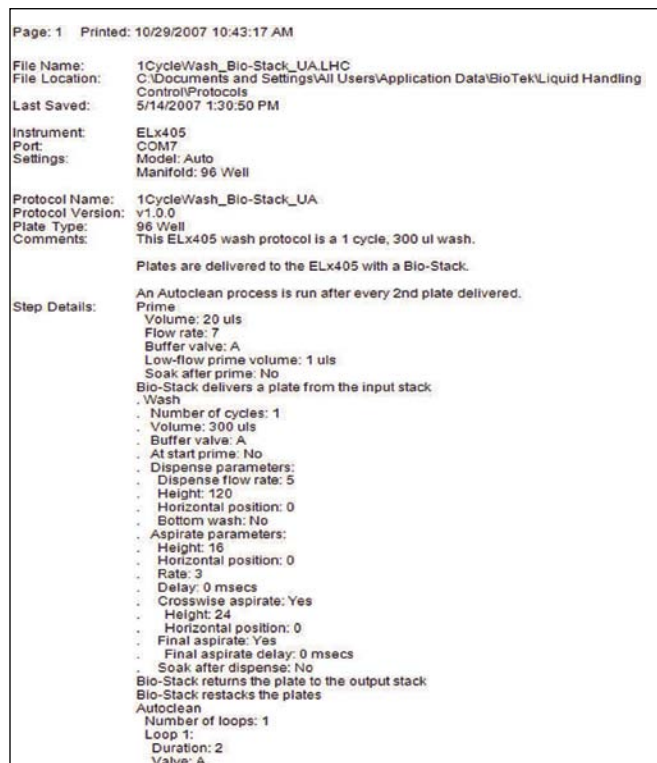
### Recommended Maintenance Schedule

Tasks	Frequency				
	Daily	Overnight /Multi-Day	Weekly	Periodic / Monthly	Before storage/ shipment
<b>Rinse/Soak the Fluid Path</b>					
Run DAY_RINSE, p. 109	✓	✓			
Run AUTOPRIME, p. 110	✓				
Run OVERNIGHT_LOOP, p. 111		✓			
Run RINSE_AND_SOAK, p. 112		✓			
Remove protein residuals and fungi growth, (if necessary), p. 112	✓		✓	✓	
<b>Clean Components</b>					
Check/empty waste bottle, p. 115	✓				✓
Clean bottles, p. 115				✓	✓
Clean plate carrier system, p. 115			✓		✓
Clean carrier transport arm, p. 116			✓		✓



Factory recommended maintenance reminders can be customized for continued instrument performance in busy laboratories.

## Printed Protocols and Automatic History:



Protocol parameters are able to be printed for safe record keeping. Additionally, whenever protocol changes are made a historical copy of the old protocol is saved.