



SZABO SCANDIC

Part of Europa Biosite

Produktinformation



Forschungsprodukte & Biochemikalien



Zellkultur & Verbrauchsmaterial



Diagnostik & molekulare Diagnostik



Laborgeräte & Service

Weitere Information auf den folgenden Seiten!
See the following pages for more information!



Lieferung & Zahlungsart

siehe unsere [Liefer- und Versandbedingungen](#)

Zuschläge

- Mindermengenzuschlag
- Trockeneiszuschlag
- Gefahrgutzuschlag
- Expressversand

SZABO-SCANDIC HandelsgmbH

Quellenstraße 110, A-1100 Wien

T. +43(0)1 489 3961-0

F. +43(0)1 489 3961-7

mail@szabo-scandic.com

www.szabo-scandic.com

[linkedin.com/company/szaboscandic](https://www.linkedin.com/company/szaboscandic) 

TDP43 antibody [GT6310]

Cat No. GTX633973

| | |
|--------------------|-------------------|
| Host | Mouse |
| Clonality | Monoclonal |
| Isotype | IgG2a |
| Application | WB, IHC-P, IHC-Fr |
| Reactivity | Human, Mouse, Rat |

Package

25 µl, 100 µl

APPLICATION

Application Note

*Optimal dilutions/concentrations should be determined by the researcher.

| Suggested dilution | Dilution |
|--------------------|----------------|
| WB | 1:1000-1:10000 |
| IHC-P | 1:100-1:1000 |
| IHC-Fr | 1:100-1:1000 |

Not tested in other applications.

Calculated MW 45 kDa. ([Note](#))

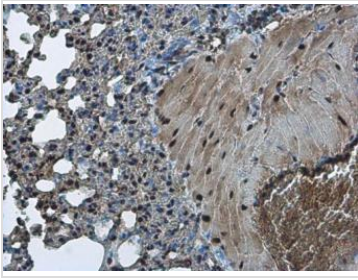
PROPERTIES

| | |
|----------------------|--|
| Form | Liquid |
| Buffer | PBS |
| Storage | Store as concentrated solution. Centrifuge briefly prior to opening vial. For short-term storage (1-2 weeks), store at 4°C. For long-term storage, aliquot and store at -20°C or below. Avoid multiple freeze-thaw cycles. |
| Concentration | 1 mg/ml (Please refer to the vial label for the specific concentration.) |
| Immunogen | Recombinant protein encompassing a sequence within the center region of human TDP43. The exact sequence is proprietary. |
| Purification | Affinity purified by Protein A. |
| Conjugation | Unconjugated |
| Note | For laboratory use only. Not for any clinical, therapeutic, or diagnostic use in humans or animals. Not for animal or human consumption. |



For full product information, images and publications, please visit our [website](#).

DATA IMAGES

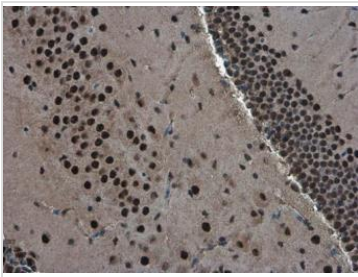
**GTX633973 IHC-P Image**

TDP43 antibody [GT6310] detects TDP43 protein at nucleus in mouse lung by immunohistochemical analysis.

Sample: Paraffin-embedded mouse lung.

TDP43 antibody [GT6310] (GTX633973) diluted at 1:200.

Antigen Retrieval: Citrate buffer, pH 6.0, 15 min

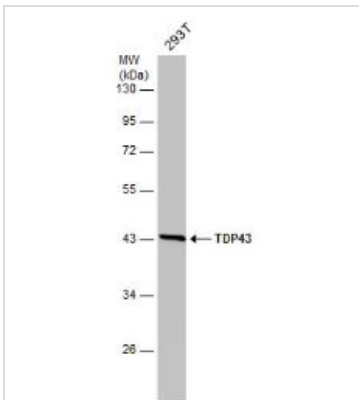
**GTX633973 IHC-P Image**

TDP43 antibody [GT6310] detects TDP43 protein at nucleus in mouse brain by immunohistochemical analysis.

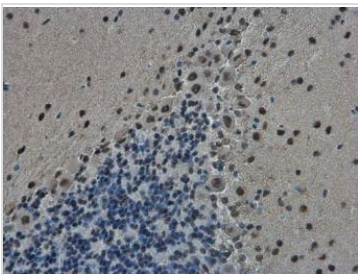
Sample: Paraffin-embedded mouse brain.

TDP43 antibody [GT6310] (GTX633973) diluted at 1:200.

Antigen Retrieval: Citrate buffer, pH 6.0, 15 min

**GTX633973 WB Image**

Whole cell extract (30 µg) was separated by 10% SDS-PAGE, and the membrane was blotted with TDP43 antibody [GT6310] (GTX633973) diluted at 1:5000.

**GTX633973 IHC-P Image**

TDP43 antibody [GT6310] detects TDP43 protein at nucleus in rat brain by immunohistochemical analysis.

Sample: Paraffin-embedded rat brain.

TDP43 antibody [GT6310] (GTX633973) diluted at 1:200.

Antigen Retrieval: Citrate buffer, pH 6.0, 15 min



For full product information, images and publications, please visit our [website](#).