



SZABO SCANDIC

Part of Europa Biosite

Produktinformation



Forschungsprodukte & Biochemikalien



Zellkultur & Verbrauchsmaterial



Diagnostik & molekulare Diagnostik



Laborgeräte & Service

Weitere Information auf den folgenden Seiten!
See the following pages for more information!



Lieferung & Zahlungsart

siehe unsere [Liefer- und Versandbedingungen](#)

Zuschläge

- Mindermengenzuschlag
- Trockeneiszuschlag
- Gefahrgutzuschlag
- Expressversand

SZABO-SCANDIC HandelsgmbH

Quellenstraße 110, A-1100 Wien

T. +43(0)1 489 3961-0

F. +43(0)1 489 3961-7

mail@szabo-scandic.com

www.szabo-scandic.com

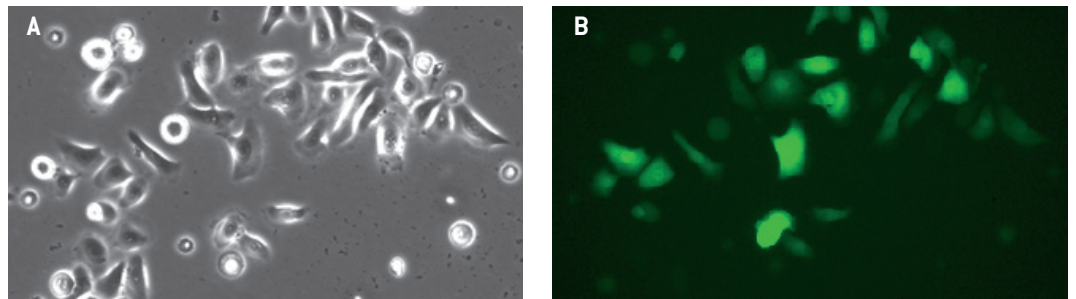
[linkedin.com/company/szaboscandic](https://www.linkedin.com/company/szaboscandic) 

Amaxa[®] Human Keratinocyte Nucleofector[®] Kit

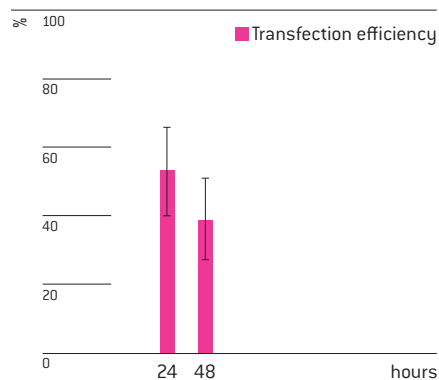
For Human Keratinocytes - Neonatal

Human Keratinocytes - Neonatal [Invitrogen; Cat. No. C-001-5C]; isolated from neonatal foreskin; undifferentiated adherent epidermal cells with cobble stone-like morphology which changes upon differentiation

Example for Nucleofection[®] of primary neonatal human keratinocytes



Primary human neonatal keratinocytes were transfected using the Human Keratinocyte Nucleofector[®] Kit, program T-007 and 2.5 μg of a plasmid encoding the enhanced green fluorescent protein eGFP. 24 hours post Nucleofection[®], the cells were analyzed by light (A) and fluorescence microscopy (B).



Transfection efficiencies of human neonatal keratinocytes 24 and 48 hours post Nucleofection[®]. Cells from various lots were transfected with program T-018 and a plasmid encoding the enhanced green fluorescent protein eGFP. Cells were analyzed by flow cytometry and cell viability usually varies between 50 – 60%.

Product Description

Cat. No.	VPD-1002
Size (Reactions)	25
Human Keratinocyte Nucleofector [®] Solution	2.25 ml (2.05 ml + 10% overfill)
Supplement	0.5 ml (0.45 ml + 10% overfill)
pmaxGFP [®] Vector (0.5 $\mu\text{g}/\mu\text{l}$ in 10 mM Tris pH 8.0)	30 μg
Certified cuvettes	25
Plastic pipettes	25
Storage and stability	Store Nucleofector [®] Solution, Supplement and pmaxGFP [®] Vector at 4°C. For long-term storage, pmaxGFP [®] Vector is ideally stored at -20°C. The expiration date is printed on the solution box. Once the Nucleofector [®] Supplement is added to the Nucleofector [®] Solution it is stable for three months at 4°C.

Required Material

Note Please make sure that the entire supplement is added to the Nucleofector® Solution. The ratio of Nucleofector® Solution to supplement is 4.5 : 1. For a single reaction use 82 µl of Nucleofector® Solution plus 18 µl of supplement to make 100 µl of total reaction volume.

- Nucleofector® Device
- Supplemented Nucleofector® Solution at room temperature
- Supplied certified cuvettes
- Supplied plastic pipettes
- Supplied pmaxGFP® Vector
- Substrate of interest, highly purified, preferably by using endotoxin free kits; A260 : A280 ratio should be at least 1.8
- 6-well culture dish or culture system of your choice
- **For trypsinization:** Trypsin/EDTA Solution [Invitrogen, Cat. No. R-001-100] and Trypsin Neutralizing Solution (TNS) [Invitrogen, Cat. No. R-002-100]
- **Culture medium:** EpiLife® Medium [Invitrogen, Cat. No. M-EPI-500] supplemented with Human Keratinocyte Growth Supplement HKGS [Invitrogen, Cat. No. S-001-5] or Keratinocytes - SFM [Invitrogen, Cat. No. 17005-042] mixed 1 : 1 with MCDB 153 medium [Biochrom, Cat. No. F8115]
- Prewarm appropriate volume of culture media at 37°C (1.5 ml per sample)
- Appropriate number of cells (0.5 – 1 x 10⁶ cells per sample)
Minimal cell number: 3 x 10⁵ [a lower cell number may lead to major increase in cell mortality]
Maximum cell number: 1 x 10⁶

1. Pre Nucleofection®

Note Transfection results may be donor - dependent.

Cell culture recommendations

- 1.1 Seeding conditions: 2.5 x 10³ cells/cm²
- 1.2 Replace media every 2 – 3 times per week; 2 – 3 ml per 25 cm² flask
- 1.3 Cells should be passaged after reaching 60 – 70% confluency
- 1.4 For Nucleofection® cells should be preferably passaged 4 – 5 days before
- 1.5 Do not use cells after passage number 5 as this may result in substantially lower gene transfer efficiency and viability. Also cell detachment using trypsin treatment becomes more difficult and may damage the cells
- 1.6 Optimal confluency before Nucleofection® 60 – 70%. Higher confluency may reduce viability

Trypsinization

- 1.7 Remove media from the cultured cells and wash cells once with PBS; use at least same volume of PBS as culture media
- 1.8 For harvesting, incubate the cells 5 – 7 minutes at 37°C with recommended volume of indicated trypsinization reagent (please see required material)
- 1.9 Neutralize trypsinization reaction with Trypsin Neutralizing Solution once the majority of the cells (>90%) have been detached

2. Nucleofection®

One Nucleofection® Sample contains

0.5 – 1 x 10 ⁶ cells
2 – 3 µg plasmid DNA (in 1 – 5 µl H ₂ O or TE) or 2 µg pmaxGFP® Vector or 30 – 300 nM siRNA (3 – 30 pmol/sample)
100 µl Human Keratinocyte Nucleofector® Solution

- 2.1 Prepare 6-well plates by filling appropriate number of wells with 1.5 ml of supplemented culture media and pre-incubate/equilibrate plates in a humidified 37°C/5% CO₂ incubator
- 2.2 Harvest the cells by trypsinization (please see 1.7 – 1.9)
- 2.3 Count an aliquot of the trypsinized cells and determine cell density
- 2.4 Centrifuge the required number of cells (**0.5 x 10⁶ cells per sample**) at **200xg for 7 minutes** at room temperature
- 2.5 Resuspend the cell pellet carefully in 100 µl room temperature Nucleofector® Solution per sample
- 2.6 Combine 100 µl of cell suspension with **2 – 3 µg DNA**, **2 µg pmaxGFP® Vector** or **30 nM – 300 nM siRNA** (3 – 30 pmol/sample) or other substrates
- 2.7 Transfer cell/DNA suspension into certified cuvette; sample must cover the bottom of the cuvette without air bubbles. Close the cuvette with the cap
- 2.8 Select the appropriate Nucleofector® Program **T-007** for high viability or **T-018** for high transfection efficiency (T-07 or T-18 for Nucleofector® I Device)
- 2.9 Insert the cuvette with cell/DNA suspension into the Nucleofector® Cuvette Holder and apply the selected program
- 2.10 Take the cuvette out of the holder once the program is finished
- 2.11 Add ~500 µl of the pre-equilibrated culture media to the cuvette and gently transfer the sample immediately into the 6-well plate (final volume 1.5 ml media per well/sample). Use the supplied pipettes and avoid repeated aspiration of the sample

3. Post Nucleofection®

- 3.1 Incubate the cells in a humidified 37°C/5% CO₂ incubator until analysis and change medium 24 hours post Nucleofection®
- 3.2 Gene expression or down regulation, respectively, is often detectable after only 4 – 8 hours but ideally, cells should be left undisturbed until medium change 24 hours post Nucleofection®, as cells may, just like freshly thawed cells, need longer to attach

Additional Information

For an up-to-date list of all Nucleofector® References, please refer to:
www.lonza.com/nucleofection-citations

For more technical assistance, contact our Scientific Support Team:

USA/Canada
Phone: 800 521 0390 (toll-free)
Fax: 301 845 8338
E-mail: scientific.support@lonza.com

Europe and Rest of World
Phone: +49 221 99199 400
Fax: +49 221 99199 499
E-mail: scientific.support.eu@lonza.com

Lonza Cologne AG
50829 Cologne, Germany

Please note that the Amaxa® Nucleofector® Technology is not intended to be used for diagnostic purposes or for testing or treatment in humans.

The Nucleofector® Technology, comprising Nucleofection® Process, Nucleofector® Device, Nucleofector® Solutions, Nucleofector® 96-well Shuttle® System and 96-well Nucleocuvette® plates and modules is covered by patent and/or patent-pending rights owned by Lonza Cologne AG.

Amaxa, Nucleofector, Nucleofection and maxGFP are registered trademarks of the Lonza Cologne AG in Germany and/or U.S. and/or other countries.

EpiLife is a registered trademark of Invitrogen.

Other product and company names mentioned herein are the trademarks of their respective owners.

This kit contains a proprietary nucleic acid coding for a proprietary copepod fluorescent protein intended to be used as a positive control with this Lonza product only. Any use of the proprietary nucleic acid or protein other than as a positive control with this Lonza product is strictly prohibited. USE IN ANY OTHER APPLICATION REQUIRES A LICENSE FROM EVROGEN. To obtain such a license, please contact Evrogen at license@evrogen.com.

The CMV promoter is covered under U.S. Patents 5,168,062 and 5,385,839 and its use is permitted for research purposes only. Any other use of the CMV promoter requires a license from the University of Iowa Research Foundation, 214 Technology Innovation Center, Iowa City, IA 52242.

The use of this product in conjunction with materials or methods of third parties may require a license by a third party. User shall be fully responsible for determining whether and from which third party it requires such license and for the obtainment of such license.

No statement is intended or should be construed as a recommendation to infringe any existing patent.

© Copyright 2009, Lonza Cologne AG. All rights reserved DPD-1002 09/09