



# SZABO SCANDIC

Part of Europa Biosite

## Produktinformation



Forschungsprodukte & Biochemikalien



Zellkultur & Verbrauchsmaterial



Diagnostik & molekulare Diagnostik



Laborgeräte & Service

Weitere Information auf den folgenden Seiten!  
See the following pages for more information!



### Lieferung & Zahlungsart

siehe unsere [Liefer- und Versandbedingungen](#)

### Zuschläge

- Mindermengenzuschlag
- Trockeneiszuschlag
- Gefahrgutzuschlag
- Expressversand

### SZABO-SCANDIC HandelsgmbH

Quellenstraße 110, A-1100 Wien

T. +43(0)1 489 3961-0

F. +43(0)1 489 3961-7

[mail@szabo-scandic.com](mailto:mail@szabo-scandic.com)

[www.szabo-scandic.com](http://www.szabo-scandic.com)

[linkedin.com/company/szaboscandic](https://www.linkedin.com/company/szaboscandic) 

# Anti-HSP60 Antibody [LK2]

Mouse Anti-Human HSP60 Monoclonal IgG1  
Catalog No. SMC-111



Discovery through partnership | Excellence through quality

## Overview

---

### Product Name

HSP60 Antibody

### Description

Mouse Anti-Human HSP60 Monoclonal IgG1

### Species Reactivity

Dog, Human, Monkey, Mouse, Rat, Bacteria, Bacteria (Salmonella Typhimurium), Bovine, Chicken, E. coli (Escherichia coli), Fish, Guinea Pig (Cavia porcellus), H. pylori (Helicobacter pylori), Hamster, Insect, Nematode (Trichinella spiralis), Pig, Plant, Rabbit, Spinach, Three-spined stickleback (Gasterosteus aculeatus), White Fly (Aleyrodidae), Yeast

### Applications

WB, IHC, FCM

### Antibody Dilution

WB (1:4000), IHC (1:100); optimal dilutions for assays should be determined by the user.

### Host Species

Mouse

### Immunogen Species

Human

### Immunogen

Recombinant human HSP60

### Concentration

1 mg/ml

### Conjugates

Alkaline Phosphatase, APC, ATTO 390, ATTO 488, ATTO 565, ATTO 594, ATTO 633, ATTO 655, ATTO 680, ATTO 700, Biotin, FITC, HRP, PE/ATTO 594, PerCP, RPE, Streptavidin, Unconjugated

## Properties

---

### Storage Buffer

PBS, 50% glycerol, 0.1mM PMSF

### Storage Temperature

-20°C

### Shipping Temperature

Blue Ice or 4°C

## Purification

Protein G Purified

## Clonality

Monoclonal

## Clone Number

LK2

## Isotype

IgG1

## Specificity

Detects ~60kDa.

## Cite This Product

Mouse Anti-Human HSP60 Monoclonal, Clone LK2 (StressMarq Biosciences Inc., Victoria BC CANADA, Catalog # SMC-111)

## Certificate Of Analysis

0.25 µg/ml of SMC-111 was sufficient for detection of HSP60 in 10 µg of heat shocked HeLa cell lysate by colorimetric immunoblot analysis using goat anti-mouse IgG as the secondary antibody.

## Biological Description

### Alternative Names

CPN60 Antibody, GROEL Antibody, HLD4 Antibody, HSP 60 Antibody, HSP65 Antibody, HSPD1 Antibody, HuCHA60 Antibody, SPG 13 Antibody

### Research Areas

Cancer, Heat Shock

### Cellular Localization

Mitochondrion, Mitochondrion Matrix

### Accession Number

NP\_002147.2

### Gene ID

3329

### Swiss Prot

P10809

## Scientific Background

In both prokaryotic and eukaryotic cells, the misfolding and aggregation of proteins during biogenesis and under conditions of cellular stress are prevented by molecular chaperones. Members of the HSP60 family of heat shock proteins are some of the best characterized chaperones. HSP60, also known as Cpn60 or GroEl, is an abundant protein synthesized constitutively in the cell that is induced to a higher concentration after brief cell shock. It is present in many species and exhibits a remarkable sequence homology among various counterparts in bacteria, plants, and mammals with more than half of the residues identical between bacterial and mammalian HSP60 (1-3). Whereas mammalian HSP60 is localized within the mitochondria, plant HSP60, or otherwise known as Rubisco-binding protein, is located in plant chloroplasts.

It has been indicated that these proteins carry out a very important biological function due to the fact that HSP60 is present in so many different species. The common characteristics of the HSP60s from the divergent species are i) high abundance, ii) induction

with environmental stress such as heat shock, iii) homo-oligomeric structures of either 7 or 14 subunits which reversibly dissociate in the presence of Mg<sup>2+</sup> and ATP, iv) ATPase activity and v) a role in folding and assembly of oligomeric protein structures (4). These similarities are supported by recent studies where the single-ring human mitochondrial homolog, HSP60 with its co-chaperonin, HSP10 were expressed in a *E. coli* strain, engineered so that the *groE* operon is under strict regulatory control. This study has demonstrated that expression of HSP60-HSP10 was able to carry out all essential *in vivo* functions of GroEL and its co-chaperonin, GroES (5). Another important function of HSP60 and HSP10 is their protective functions against infection and cellular stress. HSP60 has however been linked to a number of autoimmune diseases, as well as Alzheimer's, coronary artery diseases, MS, and diabetes (6-9).

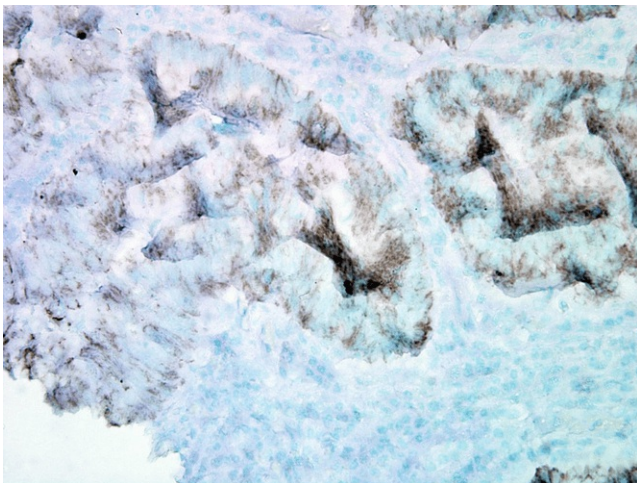
---

## References

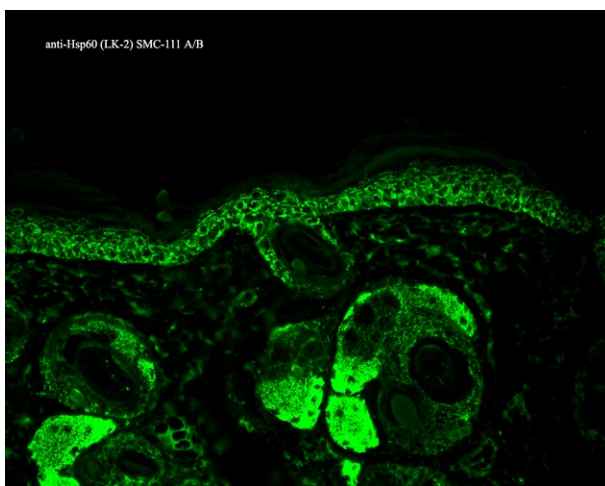
1. Hartl, F.U. (1996) *Nature* 381: 571-579.
  2. Bukau, B. and Horwich, A.L. (1998) *Cell* 92: 351-366.
  3. Hartl, F.U. and Hayer-Hartl, M. (2002) *Science* 295: 1852- 1858.
  4. Jindal, S., et al. (1989) *Molecular and Cellular Biology* 9: 2279-2283.
  5. La Verda, D., et al (1999) *Infect Dis. Obstet. Gynecol.* 7: 64-71.
  6. Itoh, H. et al. (2002) *Eur. J. Biochem.* 269: 5931-5938.
  7. Gupta, S. and Knowlton, A.A. *J. Cell Mol Med.* 9: 51-58.
  8. Deocaris, C.C. et al. (2006) *Cell Stress Chaperones* 11: 116-128.
  9. Lai, H.C. et al. (2007) *Am. J. Physiol. Endocrinol. Metab.* 292: E292-E297.
  10. Gao, Y.L., et al (1995) *J. of Immunology* 154: 3548-3556.
  11. Neuer, A., et al (1997) *European Society for Human Reproduction and Embryology* 12(5):925-929.
  12. Bason, C., et al (2003) *Lancet* 362(9400): 1971-1977.
- 

## Product Images

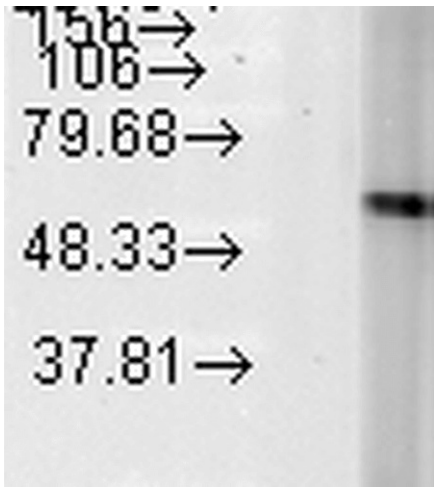
---



Immunohistochemistry analysis using Mouse Anti-Hsp60 Monoclonal Antibody, Clone LK-2 (SMC-111). Tissue: colon carcinoma. Species: Human. Fixation: Formalin. Primary Antibody: Mouse Anti-Hsp60 Monoclonal Antibody (SMC-111) at 1:100000 for 12 hours at 4°C. Secondary Antibody: Biotin Goat Anti-Mouse at 1:2000 for 1 hour at RT. Counterstain: Mayer Hematoxylin (purple/blue) nuclear stain at 200 µl for 2 minutes at RT. Localization: Inflammatory cells. Magnification: 40x.



Immunohistochemistry analysis using Mouse Anti-Hsp60 Monoclonal Antibody, Clone LK-2 (SMC-111). Tissue: backskin. Species: Mouse. Fixation: Bouin's Fixative and paraffin-embedded. Primary Antibody: Mouse Anti-Hsp60 Monoclonal Antibody (SMC-111) at 1:100 for 1 hour at RT. Secondary Antibody: FITC Goat Anti-Mouse (green) at 1:50 for 1 hour at RT. Localization: Cytoplasmic Staining.



Western Blot analysis of Human Heat Shocked HeLa cell lysates showing detection of Hsp60 protein using Mouse Anti-Hsp60 Monoclonal Antibody, Clone LK-2 (SMC-111). Load: 15  $\mu$ g protein. Block: 1.5% BSA for 30 minutes at RT. Primary Antibody: Mouse Anti-Hsp60 Monoclonal Antibody (SMC-111) at 1:1000 for 2 hours at RT. Secondary Antibody: Sheep Anti-Mouse IgG: HRP for 1 hour at RT.

## Product Citations (2)

---

### Western Blot

---

#### **Cold acclimation increases levels of some heat shock protein and sirtuin isoforms in threespine stickleback.**

Teigen, L.E., Orczewska, J.I., McLaughlin, J. (2015) *Comp Biochem Physiol A Mol Integr Physiol.* 188:139-47.

**PubMed ID:** 26123780 **Reactivity:** *Gasterosteus aculeatus* (Three-spined stickleback) **Applications:** Western Blot

#### **Identification of novel oxidized protein substrates and physiological partners of the mitochondrial ATP-dependent Lon-like protease Pim1.**

Bayot A. et al. (2010) *J Biol Chem.* 285 (15): 11445-11457.

**PubMed ID:** 20150421 **Reactivity:** Yeast **Applications:** Western Blot

## Reviews

---

Based on validation through cited publications.



**StressMarq Biosciences**

June 14, 2016: