



SZABO SCANDIC

Part of Europa Biosite

Produktinformation



Forschungsprodukte & Biochemikalien



Zellkultur & Verbrauchsmaterial



Diagnostik & molekulare Diagnostik



Laborgeräte & Service

Weitere Information auf den folgenden Seiten!
See the following pages for more information!



Lieferung & Zahlungsart

siehe unsere [Liefer- und Versandbedingungen](#)

Zuschläge

- Mindermengenzuschlag
- Trockeneiszuschlag
- Gefahrgutzuschlag
- Expressversand

SZABO-SCANDIC HandelsgmbH

Quellenstraße 110, A-1100 Wien

T. +43(0)1 489 3961-0

F. +43(0)1 489 3961-7

mail@szabo-scandic.com

www.szabo-scandic.com

[linkedin.com/company/szaboscandic](https://www.linkedin.com/company/szaboscandic)

Anti-Alpha A Crystallin Antibody [1H3.B8]

Mouse Anti-Human Alpha A Crystallin Monoclonal IgG1
Catalog No. SMC-142



Discovery through partnership | Excellence through quality

Overview

Product Name

Alpha A Crystallin Antibody

Description

Mouse Anti-Human Alpha A Crystallin Monoclonal IgG1

Species Reactivity

Human, Mouse, Rat, Bovine

Applications

WB, ELISA, ICC/IF

Antibody Dilution

WB (1:2000), ICC/IF (1:100); optimal dilutions for assays should be determined by the user.

Host Species

Mouse

Immunogen Species

Human

Immunogen

Native Alpha Crystallin

Concentration

1 mg/ml

Conjugates

Alkaline Phosphatase, APC, ATTO 390, ATTO 488, ATTO 565, ATTO 594, ATTO 633, ATTO 655, ATTO 680, ATTO 700, Biotin, FITC, HRP, PE/ATTO 594, PerCP, RPE, Streptavidin, Unconjugated

Properties

Storage Buffer

PBS pH7.2, 50% glycerol, 0.09% sodium azide

Storage Temperature

-20°C

Shipping Temperature

Blue Ice or 4°C

Purification

Protein G Purified

Clonality

Monoclonal

Clone Number

1H3.B8

Isotype

IgG1

Specificity

Detects ~20kDa. Does not cross-react with β B-crystallin, β L-crystallin, β H-crystallin, β -crystallin, HSP25, HSP27 or HSP47 proteins.

Cite This Product

Mouse Anti-Human Alpha A Crystallin Monoclonal, Clone 1H3.B8 (StressMarq Biosciences Inc., Victoria BC CANADA, Catalog # SMC-142)

Certificate Of Analysis

0.5 μ g/ml was sufficient for detection of 100 ng purified alphaA crystalline by colorimetric immunoblot analysis using Goat Anti-Mouse IgG:HRP as the secondary.

Biological Description

Alternative Names

Heat shock protein beta4 Antibody, Acry 1 Antibody, CRYA1 Antibody, CRYAA Antibody, HSPB4 Antibody

Research Areas

Cancer, Heat Shock, Cell Signaling, Chaperones, Neuroscience, Trafficking

Cellular Localization

Cytoplasm, Nucleus

Accession Number

NP_000385.1

Gene ID

1409

Swiss Prot

P02489

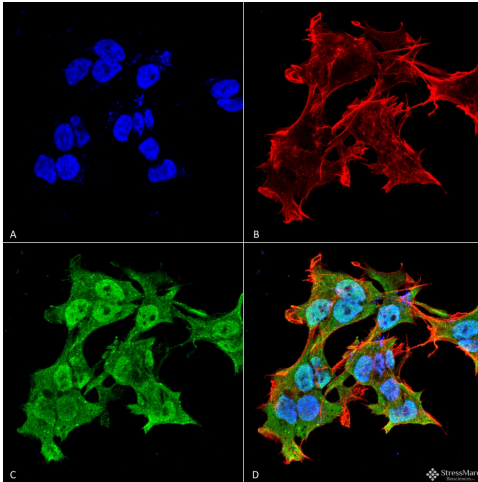
Scientific Background

The alpha-crystallins are major water-soluble lens structural proteins of the vertebrate eye that are related to the small heat shock protein family. The alpha-crystallins possess structural and functional similarities with HSP25 and HSP27 (1). Mammalian lens crystallins are divided into alpha, beta and gamma families. Alpha and beta families are further divided into acidic and basic groups (Alpha-A and Alpha-B respectively). In the lens, alpha-crystallin primarily functions to maintain proper refractive index, however it can also function as a molecular chaperone that binds to the denatured proteins, keeping them in solution and thereby maintaining the translucency of the lens. When cellular stress occurs, alpha-crystallin enters its phosphorylated state and may serve a structural control function and play a role in protein maintenance (2). In addition to their interaction with proteins, alpha-crystallins also interact with native molecules such as membrane proteins, Golgi matrix protein, structural proteins, nuclear proteins and DNA (3, 4, 5, 6, and 7). Two other functions are an autokinase activity and participation in the intracellular architecture, and it has also been proven that both alpha-A and B prevent apoptosis by inhibiting caspases (8).

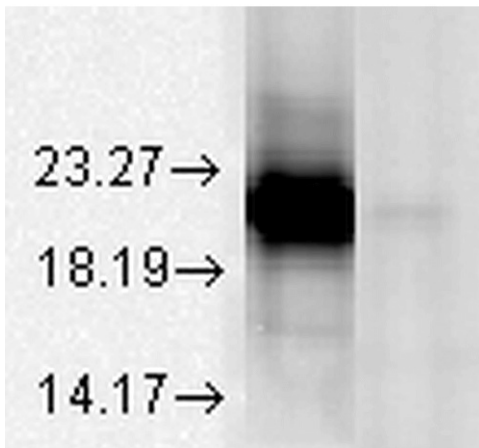
References

1. Merck K.B. et al. (1993) J Biol Chem. 268: 1046-1052.
2. Horwitz J. (1992) Proc Natl Acad Sci USA 89(21): 10449-10453.
3. Cobb B.A. and Petrash J.M. (2002) Biochemistry. 41: 483-490
4. Horwitz J. (2003) Exp Eye Res. 76: 145-153.
5. Bullard B. et al. (2004) J Biol Chem. 279: 7917-7924.
6. Gangalum R.K., Schibler M.J. and Bhat S.P. (2004) J Biol Chem. 279: 43374.43377.
7. Maddala R. and Rao V.P. (2005) Exp Cell Res. 306: 203-215.
8. Young J., et al. (2007) Molecular Vision 13: 566-577.

Product Images



Immunocytochemistry/Immunofluorescence analysis using Mouse Anti-Alpha A Crystallin Monoclonal Antibody, Clone 1H3.B8 (SMC-142). Tissue: Neuroblastoma cell line SK-N-BE. Species: Human. Fixation: 4% Formaldehyde for 15 min at RT. Primary Antibody: Mouse Anti-Alpha A Crystallin Monoclonal Antibody (SMC-142) at 1:100 for 60 min at RT. Secondary Antibody: Goat Anti-Mouse ATTO 488 at 1:100 for 60 min at RT. Counterstain: Phalloidin Texas Red F-Actin stain; DAPI (blue) nuclear stain at 1:1000, 1:5000 for 60min RT, 5min RT. Localization: Cytoplasm . Magnification: 60X. (A) DAPI (blue) nuclear stain (B) Phalloidin Texas Red F-Actin stain (C) Alpha A Crystallin Antibody (D) Composite.



Western Blot analysis of Bovine tissue lysate showing detection of Alpha A Crystallin protein using Mouse Anti-Alpha A Crystallin Monoclonal Antibody, Clone 1H3.B8 (SMC-142). Load: 15 µg protein. Block: 1.5% BSA for 30 minutes at RT. Primary Antibody: Mouse Anti-Alpha A Crystallin Monoclonal Antibody (SMC-142) at 1:1000 for 2 hours at RT. Secondary Antibody: Sheep Anti-Mouse IgG: HRP for 1 hour at RT. This blot shows absolute specificity as Left: AlphaA Crystallin, Right: AlphaB Crystallin.

Product Citations (0)

Currently there are no citations for this product.

Reviews

There are no reviews yet.