



# SZABO SCANDIC

Part of Europa Biosite

## Produktinformation



Forschungsprodukte & Biochemikalien



Zellkultur & Verbrauchsmaterial



Diagnostik & molekulare Diagnostik



Laborgeräte & Service

Weitere Information auf den folgenden Seiten!  
See the following pages for more information!



### Lieferung & Zahlungsart

siehe unsere [Liefer- und Versandbedingungen](#)

### Zuschläge

- Mindermengenzuschlag
- Trockeneiszuschlag
- Gefahrgutzuschlag
- Expressversand

### SZABO-SCANDIC HandelsgmbH

Quellenstraße 110, A-1100 Wien

T. +43(0)1 489 3961-0

F. +43(0)1 489 3961-7

[mail@szabo-scandic.com](mailto:mail@szabo-scandic.com)

[www.szabo-scandic.com](http://www.szabo-scandic.com)

[linkedin.com/company/szaboscandic](https://www.linkedin.com/company/szaboscandic) 

# Anti-SNAP-25 Antibody [SP-12]

Mouse Anti-Human SNAP-25 Monoclonal IgG1  
Catalog No. SMC-180



Discovery through partnership | Excellence through quality

## Overview

---

### Product Name

SNAP-25 Antibody

### Description

Mouse Anti-Human SNAP-25 Monoclonal IgG1

### Species Reactivity

Human, Mouse, Rat, Cat, Pig

### Applications

WB, IHC, ICC/IF, ELISA

### Antibody Dilution

WB (1:1000), IHC (1:100), ICC/IF (1:1000) ELISA (1:5000); optimal dilutions for assays should be determined by the user.

### Host Species

Mouse

### Immunogen Species

Human

### Immunogen

Raised against a crude synaptic preparation from the post mortem human brain

### Concentration

1 mg/ml

### Conjugates

Alkaline Phosphatase, APC, ATTO 390, ATTO 488, ATTO 565, ATTO 594, ATTO 633, ATTO 655, ATTO 680, ATTO 700, Biotin, FITC, HRP, PE/ATTO 594, PerCP, RPE, Streptavidin, Unconjugated

## Properties

---

### Storage Buffer

PBS pH7.4, 50% glycerol, 0.09% sodium azide

### Storage Temperature

-20°C

### Shipping Temperature

Blue Ice or 4°C

### Purification

---

Protein G Purified

---

**Clonality**

---

Monoclonal

---

**Clone Number**

---

SP-12

---

**Isotype**

---

IgG1

---

**Specificity**

---

Detects ~29kDa.

---

**Cite This Product**

---

Mouse Anti-Human SNAP25 Monoclonal, Clone SP-12 (StressMarq Biosciences Inc., Victoria BC CANADA, Catalog # SMC-180)

---

**Certificate Of Analysis**

---

1 µg/ml of SMC-180 was sufficient for detection of SNAP-25 in 10 µg of rat brain lysate by colorimetric immunoblot analysis using Goat anti-mouse IgG:HRP as the secondary antibody.

---

**Biological Description**

---

**Alternative Names**

Bdr Antibody, RIC4 Antibody, SNAP25 Antibody, SNAP-25B Antibody, SNP25 Antibody, SUP Antibody, super protein Antibody, synaptosomal associated 25kDa protein Antibody

---

**Research Areas**

---

Cancer, Cell Signaling, Cell Structure, Neuroscience, Pre-Synaptic Markers, Trafficking

---

**Cellular Localization**

---

Cytoplasm

---

**Accession Number**

---

NP\_570824.1

---

**Gene ID**

---

6616

---

**Swiss Prot**

---

P60880

---

**Scientific Background**

---

Synaptosomal-associated protein 25 (SNAP-25) is a membrane bound protein anchored to the cytosolic face of membrane via palmitoyl side chains in the middle of the molecule (1). It is a component of the SNARE complex, which is proposed to account for the specificity of membrane fusion and to directly execute fusion by forming a tight complex that brings the synaptic vesicle and plasma membranes together (2).

SNAP25 exists as two alternatively spliced isoforms, SMAP25A and SNAP25B. These isoforms are differentially expressed in neurons and neuroendocrine cells and they differ by 9 amino acids in the central portion of the protein (3).

---

**References**

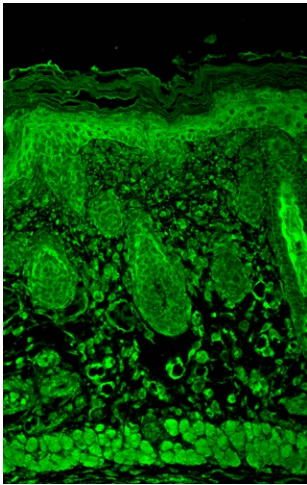
---

1. Hodel A. (1998) Int J. Biochem Cell Biol. 30(10): 1069-1073.

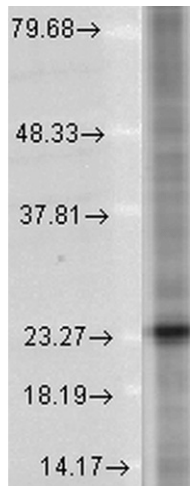
2. Sudhof T.C., and Rizo J. (2002) Nat Rev Neurosci. 3(8): 641-653.
3. Puffer E.B., et al. (2001) Biochemistry. 40(31): 9374-9378.

## Product Images

---



Immunohistochemistry analysis using Mouse Anti-SNAP25 Monoclonal Antibody, Clone SP-12 (SMC-180). Tissue: backskin. Species: Mouse. Fixation: Bouin's Fixative and paraffin-embedded. Primary Antibody: Mouse Anti-SNAP25 Monoclonal Antibody (SMC-180) at 1:100 for 1 hour at RT. Secondary Antibody: FITC Goat Anti-Mouse (green) at 1:50 for 1 hour at RT. Localization: Positive muscle, epidermal and dermal staining.



Western Blot analysis of Human Cell lysates showing detection of SNAP25 protein using Mouse Anti-SNAP25 Monoclonal Antibody, Clone SP-12 (SMC-180). Load: 15  $\mu$ g protein. Block: 1.5% BSA for 30 minutes at RT. Primary Antibody: Mouse Anti-SNAP25 Monoclonal Antibody (SMC-180) at 1:1000 for 2 hours at RT. Secondary Antibody: Sheep Anti-Mouse IgG: HRP for 1 hour at RT.

## Product Citations (2)

---

### Other Citations

---

#### **Biomarker Analysis with Grating Coupled Surface Plasmon Coupled Fluorescence.**

Mendoza, A., Dias, J.A., Zeltner, T. and Lawrence, D.A. (2014) J Adv Bio & Biotech. 1(1): 1-22.

**PubMed ID:**   **Reactivity:** Human   **Applications:** Antibody Microarray

#### **Biomarker Analysis with Grating Coupled Surface Plasmon Coupled Fluorescence.**

Mendoza, A., Dias, J.A., Zeltner, T. and Lawrence, D.A. (2014) J Adv Bio & Biotech. 1(1): 1-22.

**PubMed ID:**   **Reactivity:** Mouse   **Applications:** Antibody Microarray

## Reviews

---

There are no reviews yet.