



# SZABO SCANDIC

Part of Europa Biosite

## Produktinformation



Forschungsprodukte & Biochemikalien



Zellkultur & Verbrauchsmaterial



Diagnostik & molekulare Diagnostik



Laborgeräte & Service

Weitere Information auf den folgenden Seiten!  
See the following pages for more information!



### Lieferung & Zahlungsart

siehe unsere [Liefer- und Versandbedingungen](#)

### Zuschläge

- Mindermengenzuschlag
- Trockeneiszuschlag
- Gefahrgutzuschlag
- Expressversand

### SZABO-SCANDIC HandelsgmbH

Quellenstraße 110, A-1100 Wien

T. +43(0)1 489 3961-0

F. +43(0)1 489 3961-7

[mail@szabo-scandic.com](mailto:mail@szabo-scandic.com)

[www.szabo-scandic.com](http://www.szabo-scandic.com)

[linkedin.com/company/szaboscandic](https://www.linkedin.com/company/szaboscandic) 

# Anti-HIF2 Alpha Antibody [EP190B]

Mouse Anti-Human HIF2 alpha Monoclonal IgG1  
Catalog No. SMC-185



Discovery through partnership | Excellence through quality

## Overview

---

### Product Name

HIF2 alpha Antibody

### Description

Mouse Anti-Human HIF2 alpha Monoclonal IgG1

### Species Reactivity

Human, Mouse

### Applications

WB, IHC, ICC/IF, ELISA

### Antibody Dilution

WB (1:500), IHC (1:100), ICC/IF (1:100); optimal dilutions for assays should be determined by the user.

### Host Species

Mouse

### Immunogen Species

Human

### Immunogen

GST-human EPAS-1 (HIF2alpha) amino acids 535-631 fusion protein

### Concentration

1 mg/ml

### Conjugates

Alkaline Phosphatase, APC, ATTO 390, ATTO 488, ATTO 565, ATTO 594, ATTO 633, ATTO 655, ATTO 680, ATTO 700, Biotin, FITC, HRP, PE/ATTO 594, PerCP, RPE, Streptavidin, Unconjugated

## Properties

---

### Storage Buffer

PBS pH7.4, 50% glycerol, 0.09% sodium azide

### Storage Temperature

-20°C

### Shipping Temperature

Blue Ice or 4°C

### Purification

---

Protein G Purified

---

**Clonality**

---

Monoclonal

---

**Clone Number**

---

EP190B

---

**Isotype**

---

IgG1

---

**Specificity**

---

Detects ~100kDa. Specific for HIF2 Alpha.

---

**Cite This Product**

---

Mouse Anti-Human HIF 2 alpha Monoclonal, Clone EP190B (StressMarq Biosciences Inc., Victoria BC CANADA, Catalog # SMC-185)

---

**Certificate Of Analysis**

---

1 µg/ml of SMC-185 was sufficient for detection of HIF2? in 20 µg of CoCl<sub>2</sub>-induced Hela cell lysate by colorimetric immunoblot analysis using Goat anti-mouse IgG:HRP as the secondary antibody.

---

**Biological Description**

---

**Alternative Names**

ECYT4 Antibody, EPAS1 Antibody, HIF2alpha Antibody, HIF1 Alpha like factor Antibody, HLF Antibody, Hypoxia inducible factor 2 alpha Antibody, MOP2 Antibody, PASD2 Antibody

---

**Research Areas**

---

Cancer, Cell Signaling, Epigenetics, Oxidative Stress

---

**Cellular Localization**

---

Nucleus

---

**Accession Number**

---

NP\_001421.4

---

**Gene ID**

---

2034

---

**Swiss Prot**

---

Q99814

---

**Scientific Background**

---

Members of the hypoxia-inducible factor (HIF) family of transcription factors regulate the cellular response to hypoxia (1). HIF2-Alpha is involved in catecholamine homeostasis, vascular remodeling, physiological angiogenesis and adipogenesis. It is overexpressed in many cancerous tissues, but its exact role in tumour progression remains to be clarified (2). Studies suggest that in the case of non-small cell lung cancer, HIF2-Alpha actually is a promoter of tumor growth and progression in a solid tumor (1). Other data suggests that HIF2-Alpha is an important regulator of innate immunity, and therefore may be useful in the therapeutic target for treating inflammatory disorders and cancer (3).

---

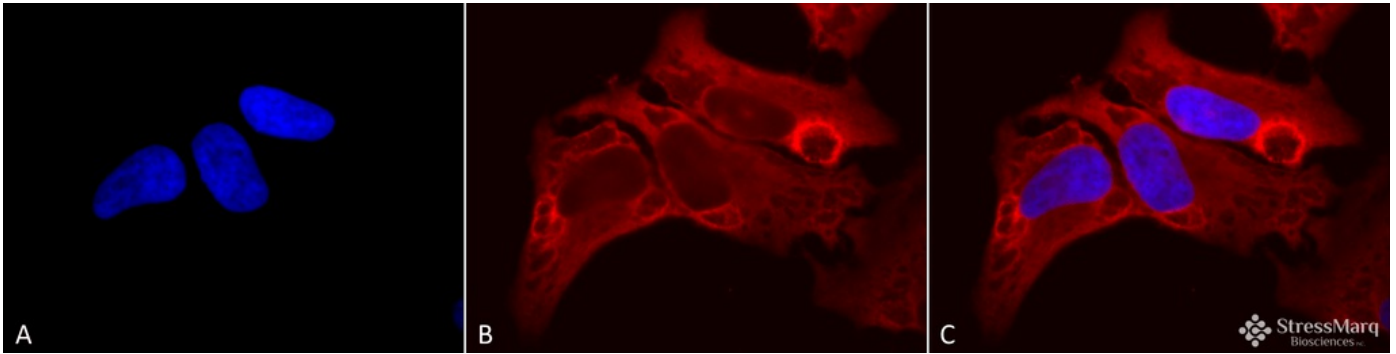
**References**

---

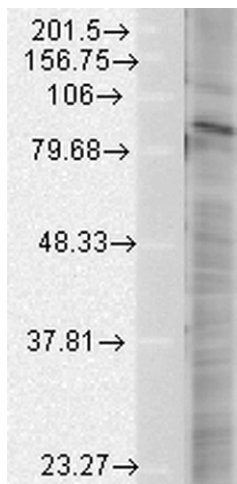
1. Kim W.Y., et al. (2009) J Clin Invest. 119(8): 2160-2170.

2. Favier J., Lapointe S., Maliba R. and Sirois M.G. (2007) BMC Cancer. 7:139.
3. Imtiyaz H.Z., et al. (2010) J Clin Invest. 120(8): 2699-2714.

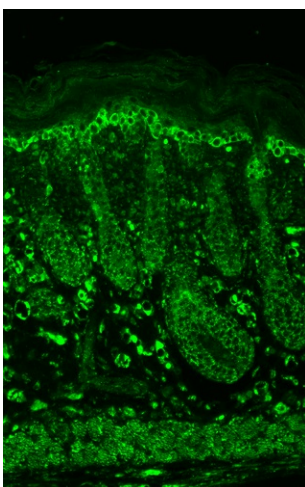
## Product Images



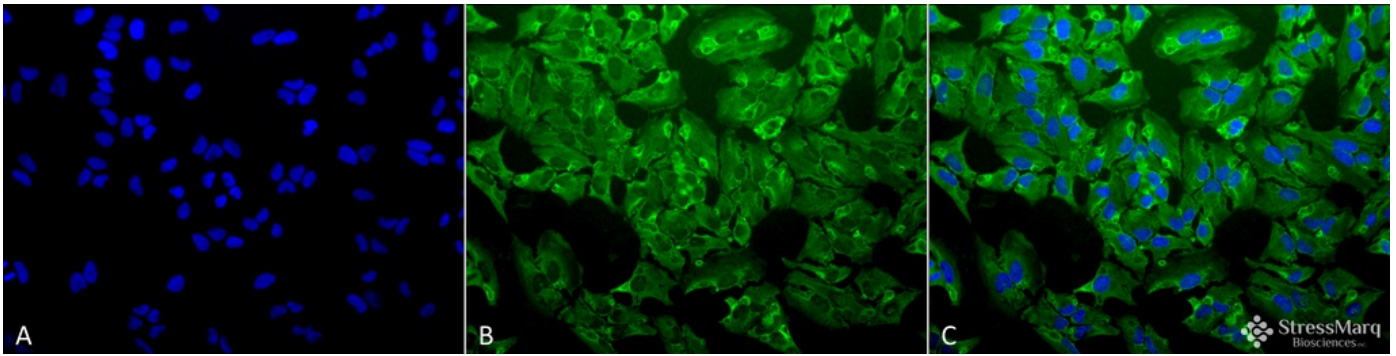
Immunocytochemistry/Immunofluorescence analysis using Mouse Anti-HIF2 alpha Monoclonal Antibody, Clone EP190b (SMC-185). Tissue: HeLa Cells. Species: Human. Fixation: 2% Formaldehyde for 20 min at RT. Primary Antibody: Mouse Anti-HIF2 alpha Monoclonal Antibody (SMC-185) at 1:100 for 12 hours at 4°C. Secondary Antibody: APC Goat Anti-Mouse (red) at 1:200 for 2 hours at RT. Counterstain: DAPI (blue) nuclear stain at 1:40000 for 2 hours at RT. Localization: Cytoplasm. Localizes to the nucleus upon hypoxia. Magnification: 100x. (A) DAPI (blue) nuclear stain. (B) Anti-HIF2 alpha Antibody. (C) Composite.



Western Blot analysis of Human HeLa cell lysates showing detection of HIF2 alpha protein using Mouse Anti-HIF2 alpha Monoclonal Antibody, Clone EP190b (SMC-185). Load: 15 µg protein. Block: 1.5% BSA for 30 minutes at RT. Primary Antibody: Mouse Anti-HIF2 alpha Monoclonal Antibody (SMC-185) at 1:1000 for 2 hours at RT. Secondary Antibody: Sheep Anti-Mouse IgG: HRP for 1 hour at RT. Cells CoCl treated.



Immunohistochemistry analysis using Mouse Anti-HIF2 alpha Monoclonal Antibody, Clone EP190b (SMC-185). Tissue: backskin. Species: Mouse. Fixation: Bouin's Fixative and paraffin-embedded. Primary Antibody: Mouse Anti-HIF2 alpha Monoclonal Antibody (SMC-185) at 1:100 for 1 hour at RT. Secondary Antibody: FITC Goat Anti-Mouse (green) at 1:50 for 1 hour at RT. Localization: Basal cell staining in the epidermis, dermis positive and muscle positive. .



Immunocytochemistry/Immunofluorescence analysis using Mouse Anti-HIF2 alpha Monoclonal Antibody, Clone EP190b (SMC-185). Tissue: HeLa Cells. Species: Human. Fixation: 2% Formaldehyde for 20 min at RT. Primary Antibody: Mouse Anti-HIF2 alpha Monoclonal Antibody (SMC-185) at 1:100 for 12 hours at 4°C. Secondary Antibody: FITC Goat Anti-Mouse (green) at 1:200 for 2 hours at RT. Counterstain: DAPI (blue) nuclear stain at 1:40000 for 2 hours at RT. Localization: Cytoplasm. Localizes to the nucleus upon hypoxia. Magnification: 20x. (A) DAPI (blue) nuclear stain. (B) Anti-HIF2 alpha Antibody. (C) Composite.

## Product Citations (3)

---

### Western Blot

---

#### **Bp5250 inhibits vascular endothelial growth factor-induced angiogenesis and HIF-1? expression on endothelial cells.**

Lin, K., Lien J., Chung, C., Kuo, S. and Huang, T. (2012) Naunyn Schmiedebergs Arch Pharmacol. 385 (1): 39-49.

**PubMed ID:** 21947252 **Reactivity:** Human **Applications:** Western Blot

### Other Citations

---

#### **Biomarker Analysis with Grating Coupled Surface Plasmon Coupled Fluorescence.**

Mendoza, A., Dias, J.A., Zeltner, T. and Lawrence, D.A. (2014) J Adv Bio & Biotech. 1(1): 1-22.

**PubMed ID:** **Reactivity:** Human **Applications:** Antibody Microarray

#### **Biomarker Analysis with Grating Coupled Surface Plasmon Coupled Fluorescence.**

Mendoza, A., Dias, J.A., Zeltner, T. and Lawrence, D.A. (2014) J Adv Bio & Biotech. 1(1): 1-22.

**PubMed ID:** **Reactivity:** Mouse **Applications:** Antibody Microarray

## Reviews

---

Based on validation through cited publications.



**StressMarq Biosciences**

June 14, 2016: