



SZABO SCANDIC

Part of Europa Biosite

Produktinformation



Forschungsprodukte & Biochemikalien



Zellkultur & Verbrauchsmaterial



Diagnostik & molekulare Diagnostik



Laborgeräte & Service

Weitere Information auf den folgenden Seiten!
See the following pages for more information!



Lieferung & Zahlungsart

siehe unsere [Liefer- und Versandbedingungen](#)

Zuschläge

- Mindermengenzuschlag
- Trockeneiszuschlag
- Gefahrgutzuschlag
- Expressversand

SZABO-SCANDIC HandelsgmbH

Quellenstraße 110, A-1100 Wien

T. +43(0)1 489 3961-0

F. +43(0)1 489 3961-7

mail@szabo-scandic.com

www.szabo-scandic.com

[linkedin.com/company/szaboscandic](https://www.linkedin.com/company/szaboscandic) 

Anti-AHA1 Antibody [4H9-D7]

Mouse Anti-Human AHA1 Monoclonal IgG1 Kappa
Catalog No. SMC-198



Discovery through partnership | Excellence through quality

Overview

Product Name

AHA1 Antibody

Description

Mouse Anti-Human AHA1 Monoclonal IgG1 Kappa

Species Reactivity

Human, Mouse

Applications

WB, ICC/IF, ELISA

Antibody Dilution

WB (1:1000), ICC/IF (1:100); optimal dilutions for assays should be determined by the user.

Host Species

Mouse

Immunogen Species

Human

Immunogen

Human Aha1, his tagged

Concentration

1 mg/ml

Conjugates

Alkaline Phosphatase, APC, ATTO 390, ATTO 488, ATTO 565, ATTO 594, ATTO 633, ATTO 655, ATTO 680, ATTO 700, Biotin, FITC, HRP, PE/ATTO 594, PerCP, RPE, Streptavidin, Unconjugated

Properties

Storage Buffer

PBS pH7.2, 50% glycerol, 0.09% sodium azide

Storage Temperature

-20°C

Shipping Temperature

Blue Ice or 4°C

Purification

Protein G Purified

Clonality

Monoclonal

Clone Number

4H9-D7

Isotype

IgG1 Kappa

Specificity

Detects ~38kDa, can run up to 45kDa on SDS Page. It sees human Aha1, Mouse Aha1 and Mouse Aha2.

Cite This Product

Mouse Anti-Human AHA1 Monoclonal, Clone 4H9-D7 (StressMarq Biosciences Inc., Victoria BC CANADA, Catalog # SMC-198)

Certificate Of Analysis

1 µg/ml of SMC-198 was sufficient for detection of Aha1 in 10 µg of HeLa cell lysate by colorimetric immunoblot analysis using Goat anti-mouse IgG:HRP as the secondary antibody.

Biological Description

Alternative Names

Aha 1 Antibody, Ahsa1 Antibody, p38 Antibody, HSPC322 Antibody, C14orf3 Antibody, Activator of HSP90 ATPase Antibody, Activator of 90 kDa heat shock protein ATPase homolog 1 Antibody

Research Areas

Cancer, Heat Shock, Cell Signaling, Chaperones, Trafficking

Cellular Localization

Cytoplasm, Endoplasmic Reticulum

Accession Number

NP_036243.1

Gene ID

10598

Swiss Prot

O95433

Scientific Background

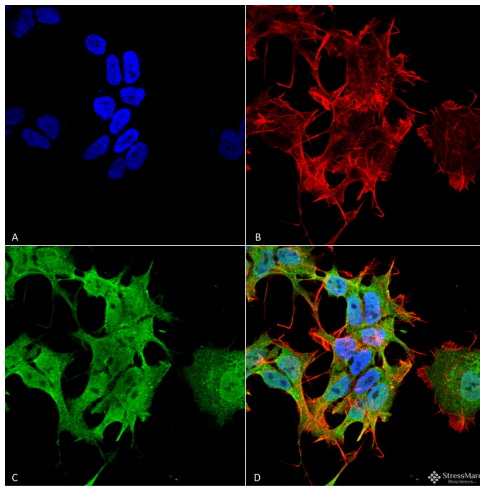
Aha1 is a member of the HSP90 cochaperone family, and is thought to stimulate HSP90 ATPase activity by competing with p23 and other co-chaperones for HSP90 binding (1, 2). It may affect a step in the endoplasmic reticulum to Golgi trafficking. Aha1 also interacts with HSPCA/HSP90 and with the cytoplasmic tail of the vesicular stomatitis virus glycoproteins (VSV G) (3). Aha1 is expressed in numerous tissues, including the brain, heart, skeletal muscle, and kidney, and at low levels, the liver and placenta. Aha1 might be a potential therapeutic strategy to increase sensitivity to HSP inhibitors (4).

References

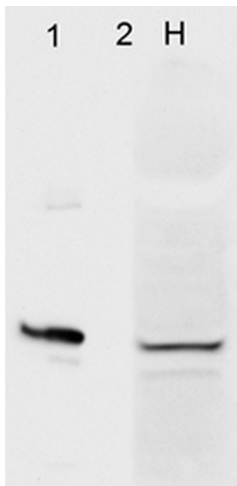
1. Hainzl O., Lapina M.C., Buchner J., Richter K. (2009) J Biol Chem. Epub.
2. Harst A., Lin H., Obermann W.M. (2005) Biochem J. 387 (pt.3): 789-796.

3. Lotz G.P., Brychzy A., Heinz S., Obermann W.M. (2008) J Cell Sci. 121(pt.5): 717-723.
4. Holmes J.L., Sharp S.Y., Hobbs S., Workman P. (2008) Cancer Res. 68(4): 1188-1197.

Product Images



Immunocytochemistry/Immunofluorescence analysis using Mouse Anti-AHA1 Monoclonal Antibody, Clone 4H9-D7 (SMC-198). Tissue: Neuroblastoma cell line SK-N-BE. Species: Human. Fixation: 4% Formaldehyde for 15 min at RT. Primary Antibody: Mouse Anti-AHA1 Monoclonal Antibody (SMC-198) at 1:100 for 60 min at RT. Secondary Antibody: Goat Anti-Mouse ATTO 488 at 1:100 for 60 min at RT. Counterstain: Phalloidin Texas Red F-Actin stain; DAPI (blue) nuclear stain at 1:1000, 1:5000 for 60min RT, 5min RT. Localization: Cytoplasm. Magnification: 60X. (A) DAPI (blue) nuclear stain (B) Phalloidin Texas Red F-Actin stain (C) AHA1 Antibody (D) Composite.



Western Blot analysis of Human HeLa cell lysates showing detection of Aha1 protein using Mouse Anti-Aha1 Monoclonal Antibody, Clone 4H9.D7 (SMC-198). Primary Antibody: Mouse Anti-Aha1 Monoclonal Antibody (SMC-198) at 1:1000. (1) HeLa cell lysate (2) recombinant Aha1 cell lysate.

Product Citations (0)

Currently there are no citations for this product.

Reviews

There are no reviews yet.