



# SZABO SCANDIC

Part of Europa Biosite

## Produktinformation



Forschungsprodukte & Biochemikalien



Zellkultur & Verbrauchsmaterial



Diagnostik & molekulare Diagnostik



Laborgeräte & Service

Weitere Information auf den folgenden Seiten!  
See the following pages for more information!



### Lieferung & Zahlungsart

siehe unsere [Liefer- und Versandbedingungen](#)

### Zuschläge

- Mindermengenzuschlag
- Trockeneiszuschlag
- Gefahrgutzuschlag
- Expressversand

### SZABO-SCANDIC HandelsgmbH

Quellenstraße 110, A-1100 Wien

T. +43(0)1 489 3961-0

F. +43(0)1 489 3961-7

[mail@szabo-scandic.com](mailto:mail@szabo-scandic.com)

[www.szabo-scandic.com](http://www.szabo-scandic.com)

[linkedin.com/company/szaboscandic](https://www.linkedin.com/company/szaboscandic) 

# Anti-GRP170 Antibody [6G7-2H5]

Mouse Anti-Human GRP170 Monoclonal IgG2aK  
Catalog No. SMC-233



Discovery through partnership | Excellence through quality

## Overview

---

### Product Name

GRP170 Antibody

### Description

Mouse Anti-Human GRP170 Monoclonal IgG2aK

### Species Reactivity

Human

### Applications

WB, ICC/IF

### Antibody Dilution

WB (1:1000), ICC/IF (1:100); optimal dilutions for assays should be determined by the user.

### Host Species

Mouse

### Immunogen Species

Human

### Immunogen

Raised against a synthetic peptide of human GRP170

### Concentration

1 mg/ml

### Conjugates

Alkaline Phosphatase, APC, ATTO 390, ATTO 488, ATTO 565, ATTO 594, ATTO 633, ATTO 655, ATTO 680, ATTO 700, Biotin, FITC, HRP, PE/ATTO 594, PerCP, RPE, Streptavidin, Unconjugated

## Properties

---

### Storage Buffer

PBS pH7.4, 50% glycerol, 0.1% sodium azide

### Storage Temperature

-20°C

### Shipping Temperature

Blue Ice or 4°C

### Purification

---

Protein G Purified

---

**Clonality**

---

Monoclonal

---

**Clone Number**

---

6G7-2H5

---

**Isotype**

---

IgG2a

---

**Specificity**

---

Detects ~170kDa.

---

**Cite This Product**

---

Mouse Anti-Human GRP170 Monoclonal, Clone 6G7-2H5 (StressMarq Biosciences Inc., Victoria BC CANADA, Catalog # SMC-233)

---

**Certificate Of Analysis**

---

1 µg/ml of SMC-233 was sufficient for detection of GRP170 in 20 µg of HEK293 lysate by colorimetric immunoblot analysis using Goat anti-mouse IgG:HRP as the secondary antibody.

---

**Biological Description**

---

**Alternative Names**

ORP150 Antibody, HSP12A Antibody, Hypoxia up regulated 1 Antibody, Orp150 Antibody, Glucose regulated Antibody 170 Antibody, 150kDa oxygen regulated Antibody Antibody

---

**Research Areas**

---

Cancer, Heat Shock, Cardiovascular System, Epigenetics, Neurodegeneration, Neuroscience, Trafficking

---

**Cellular Localization**

---

Endoplasmic Reticulum, Endoplasmic reticulum lumen

---

**Accession Number**

---

NP\_006389.3

---

**Gene ID**

---

10525

---

**Swiss Prot**

---

Q9Y4L1

---

**Scientific Background**

---

GRP170, also known as ORP150, is the largest member of glucose-regulated Antibodys, and acts as a human chaperone Antibody. It is thought to play an important role in Antibody folding and secretion in the ER. Suppression of the Antibody is associated with accelerated apoptosis, therefore having an important cryoprotective role in hypoxia-induced cellular pertubation. This cryoprotective role has led to an anti-tumor immune response, which will hopefully lead to therapeutic immunizations against cancers (1). GRP170 has also been shown to bind with dendritic cells and provide the danger signals to induce anti-tumor immune responses (2).

---

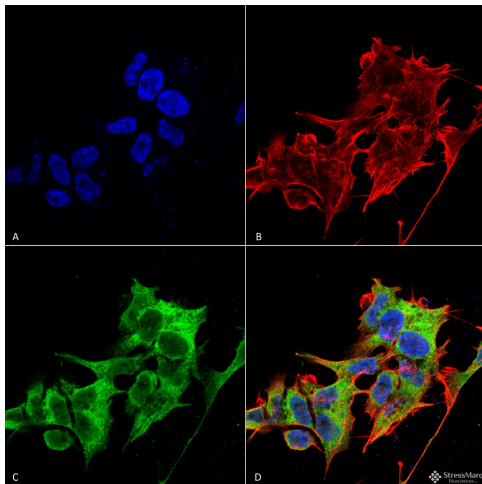
**References**

---

1. Wang H., et al. (2014) Front Oncol. 4: 377.

## Product Images

---



Immunocytochemistry/Immunofluorescence analysis using Mouse Anti-GRP170 Monoclonal Antibody, Clone 6G7-2H5 (SMC-233). Tissue: Neuroblastoma cell line SK-N-BE. Species: Human. Fixation: 4% Formaldehyde for 15 min at RT. Primary Antibody: Mouse Anti-GRP170 Monoclonal Antibody (SMC-233) at 1:100 for 60 min at RT. Secondary Antibody: Goat Anti-Mouse ATTO 488 at 1:100 for 60 min at RT. Counterstain: Phalloidin Texas Red F-Actin stain; DAPI (blue) nuclear stain at 1:1000, 1:5000 for 60min RT, 5min RT. Localization: Cytoplasm, Endoplasmic Reticulum. Magnification: 60X. (A) DAPI (blue) nuclear stain (B) Phalloidin Texas Red F-Actin stain (C) GRP170 Antibody (D) Composite.

## Product Citations (0)

---

Currently there are no citations for this product.

## Reviews

---

There are no reviews yet.