



SZABO SCANDIC

Part of Europa Biosite

Produktinformation



Forschungsprodukte & Biochemikalien



Zellkultur & Verbrauchsmaterial



Diagnostik & molekulare Diagnostik



Laborgeräte & Service

Weitere Information auf den folgenden Seiten!
See the following pages for more information!



Lieferung & Zahlungsart

siehe unsere [Liefer- und Versandbedingungen](#)

Zuschläge

- Mindermengenzuschlag
- Trockeneiszuschlag
- Gefahrgutzuschlag
- Expressversand

SZABO-SCANDIC HandelsgmbH

Quellenstraße 110, A-1100 Wien

T. +43(0)1 489 3961-0

F. +43(0)1 489 3961-7

mail@szabo-scandic.com

www.szabo-scandic.com

[linkedin.com/company/szaboscandic](https://www.linkedin.com/company/szaboscandic) 

Anti-ATG13 Antibody

Rabbit Anti-Human ATG13 Polyclonal
Catalog No. SPC-657



Discovery through partnership | Excellence through quality

Overview

Product Name

ATG13 Antibody

Description

Rabbit Anti-Human ATG13 Polyclonal

Species Reactivity

Human, Mouse

Applications

WB, ICC/IF

Antibody Dilution

WB (1:1000); ICC/IF (1:100); optimal dilutions for assays should be determined by the user.

Host Species

Rabbit

Immunogen Species

Human

Immunogen

Synthetic peptide from the mid-protein range of human ATG13

Concentration

1 mg/ml

Conjugates

Alkaline Phosphatase, APC, ATTO 390, ATTO 488, ATTO 565, ATTO 594, ATTO 633, ATTO 655, ATTO 680, ATTO 700, Biotin, FITC, HRP, PE/ATTO 594, PerCP, RPE, Streptavidin, Unconjugated

Properties

Storage Buffer

PBS, 50% glycerol, 0.09% sodium azide

Storage Temperature

-20°C

Shipping Temperature

Blue Ice or 4°C

Purification

Peptide Affinity Purified

Clonality

Polyclonal

Specificity

Detects ~56-63kDa.

Cite This Product

Rabbit Anti-Human ATG13 Polyclonal (StressMarq Biosciences Inc., Victoria BC CANADA, Catalog # SPC-657)

Certificate Of Analysis

A 1:1000 dilution of SPC-657 was sufficient for detection of ATG13 on HEK293 lysates using Goat anti-rabbit IgG:HRP as the secondary antibody.

Biological Description

Alternative Names

ATG13_Human Antibody, Autophagy related protein 13 Antibody, KIAA0652 Antibody

Research Areas

Cancer, Autophagy

Cellular Localization

Cytoplasm, Cytosol, Preautophagosomal structure

Accession Number

NP_001136145.1

Gene ID

9776

Swiss Prot

O75143

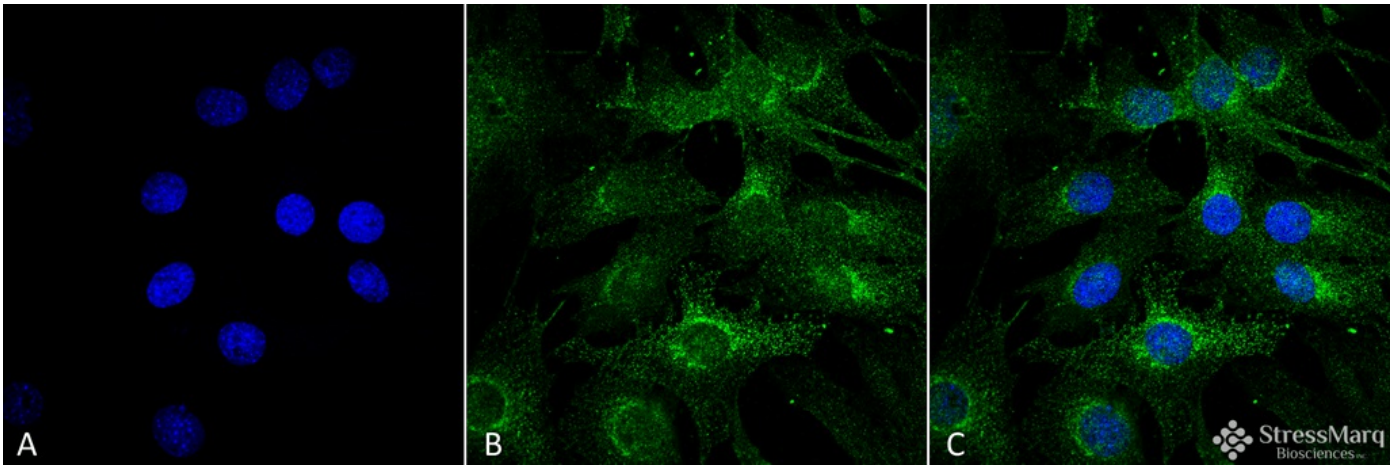
Scientific Background

ATG13 is an autophagy factor required for phagosome formation. It is a target of the TOR kinase signaling pathway that regulates autophagy through phosphorylation of ATG13 and ULK1, and the regulation of the ATG13-ULK1-RB1CC1 complex (1-3).

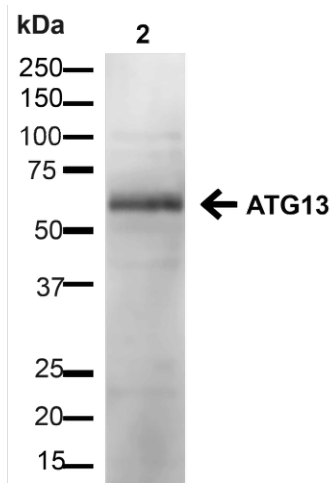
References

1. Mercer C.A., Kaliappan A., Dennis P.B. (2009) *Autophagy*. 5(5): 649-662.
 2. Hosokawa N., et al. (2009) *Mol Biol Cell*. 20(7): 1981-1991.
 3. Chan E.Y., Longatti A., McKnight N.C., Tooze S.A. (2009) *Mol Cell Biol*. 29(1): 157-171.
-

Product Images



Immunocytochemistry/Immunofluorescence analysis using Rabbit Anti-ATG13 Polyclonal Antibody (SPC-657). Tissue: Myoblast cell line C2C12. Species: Human. Fixation: 4% Formaldehyde for 15 min at RT. Primary Antibody: Rabbit Anti-ATG13 Polyclonal Antibody (SPC-657) at 1:100 for 60 min at RT. Secondary Antibody: Goat Anti-Rabbit ATTO 488 at 1:100 for 60 min at RT. Counterstain: DAPI (blue) nuclear stain at 1:5003 for 5 min RT. Localization: Cytoplasm, Cytosol. Magnification: 60X. (A) DAPI (blue) nuclear stain (B) Phalloidin Texas Red F-Actin stain (C) ATG13 Antibody (D) Composite.



Western blot analysis of Human HEK293 showing detection of ~56.6kDa ATG13 protein using Rabbit Anti-ATG13 Polyclonal Antibody (SPC-657). Lane 1: MW Ladder. Lane 2: Human HEK293 (20 µg). Load: 20 µg. Block: 5% milk + TBST for 1 hour at RT. Primary Antibody: Rabbit Anti-ATG13 Polyclonal Antibody (SPC-657) at 1:1000 for 1 hour at RT. Secondary Antibody: Goat Anti-Rabbit: HRP at 1:2000 for 1 hour at RT. Color Development: TMB solution for 12 min at RT. Predicted/Observed Size: ~56.6kDa.

Product Citations (0)

Currently there are no citations for this product.

Reviews

There are no reviews yet.