



SZABO SCANDIC

Part of Europa Biosite

Produktinformation



Forschungsprodukte & Biochemikalien



Zellkultur & Verbrauchsmaterial



Diagnostik & molekulare Diagnostik



Laborgeräte & Service

Weitere Information auf den folgenden Seiten!
See the following pages for more information!



Lieferung & Zahlungsart

siehe unsere [Liefer- und Versandbedingungen](#)

Zuschläge

- Mindermengenzuschlag
- Trockeneiszuschlag
- Gefahrgutzuschlag
- Expressversand

SZABO-SCANDIC HandelsgmbH

Quellenstraße 110, A-1100 Wien

T. +43(0)1 489 3961-0

F. +43(0)1 489 3961-7

mail@szabo-scandic.com

www.szabo-scandic.com

[linkedin.com/company/szaboscandic](https://www.linkedin.com/company/szaboscandic) 

Anti-WDFY3 Antibody

Rabbit Anti-Human WDFY3 Polyclonal
Catalog No. SPC-666



Discovery through partnership | Excellence through quality

Overview

Product Name

WDFY3 Antibody

Description

Rabbit Anti-Human WDFY3 Polyclonal

Species Reactivity

Human, Rat

Applications

WB

Antibody Dilution

WB (1:500); optimal dilutions for assays should be determined by the user.

Host Species

Rabbit

Immunogen Species

Human

Immunogen

Synthetic peptide from the N-terminal of Human WDFY3 (aa. 533-544)

Concentration

1 mg/ml

Conjugates

Alkaline Phosphatase, APC, ATTO 390, ATTO 488, ATTO 565, ATTO 594, ATTO 633, ATTO 655, ATTO 680, ATTO 700, Biotin, FITC, HRP, PE/ATTO 594, PerCP, RPE, Streptavidin, Unconjugated

Properties

Storage Buffer

PBS, 50% glycerol, 0.09% sodium azide

Storage Temperature

-20°C

Shipping Temperature

Blue Ice or 4°C

Purification

Peptide Affinity Purified

Clonality

Polyclonal

Specificity

Detects ~400 kDa.

Cite This Product

Rabbit Anti-Human WDFY3 Polyclonal (StressMarq Biosciences Inc., Victoria BC CANADA, Catalog # SPC-666)

Certificate Of Analysis

A 1:500 dilution of SPC-666 was sufficient for detection of WDFY3 in 15 µg of Human HeLa Cell Lysates by ECL immunoblot analysis using goat anti-rabbit IgG:HRP as the secondary antibody.

Biological Description

Alternative Names

WDFY3 Antibody, Alfyl Antibody, WD repeat and FYVE domain-containing protein 3 Antibody, Autophagy-linked FYVE protein Antibody, KIAA0993 Antibody

Cellular Localization

Cytoplasm, Cytoplasmic Side, Membrane, Nucleus, Nucleus Membrane, Peripheral membrane protein, PML body

Accession Number

NP_055806.2

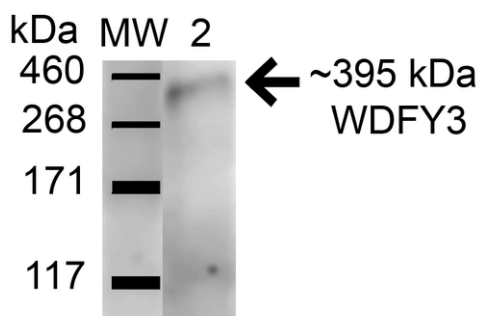
Gene ID

23001

Swiss Prot

Q8IZQ1

Product Images



Western blot analysis of Human HeLa and 293Trap cell lysates showing detection of 395.2 kDa WDFY3 protein using Rabbit Anti-WDFY3 Polyclonal Antibody (SPC-666). Lane 1: Molecular Weight Ladder (MW). Lane 2: Human HeLa and 293Trap cell lysates. Load: 15 µg . Block: 5% Skim Milk in 1X TBST. Primary Antibody: Rabbit Anti-WDFY3 Polyclonal Antibody (SPC-666) at 1:1000 for 1 hour at RT. Secondary Antibody: Goat Anti-Rabbit HRP at 1:2000 for 60 min at RT. Color Development: ECL solution for 6 min in RT. Predicted/Observed Size: 395.2 kDa.

Product Citations (0)

Currently there are no citations for this product.

Reviews

There are no reviews yet.