

# Anti-RAB1B Antibody

Rabbit Anti-Human RAB1B Polyclonal  
Catalog No. SPC-684



Discovery through partnership | Excellence through quality

## Overview

---

### Product Name

RAB1B Antibody

### Description

Rabbit Anti-Human RAB1B Polyclonal

### Species Reactivity

Human, Rat

### Applications

WB

### Antibody Dilution

WB (1:500); optimal dilutions for assays should be determined by the user.

### Host Species

Rabbit

### Immunogen Species

Human

### Immunogen

Synthetic peptide from the C-terminal of Human RAB1B (aa. 179-189)

### Concentration

1 mg/ml

### Conjugates

Alkaline Phosphatase, APC, ATTO 390, ATTO 488, ATTO 565, ATTO 594, ATTO 633, ATTO 655, ATTO 680, ATTO 700, Biotin, FITC, HRP, Unconjugated

## Properties

---

### Storage Buffer

PBS, 50% glycerol, 0.09% sodium azide

### Storage Temperature

-20°C

### Shipping Temperature

Blue Ice or 4°C

### Purification

Peptide Affinity Purified

### Clonality

Polyclonal

### Specificity

Detects ~48 kDa.

### Cite This Product

Rabbit Anti-Human RAB1B Polyclonal (StressMarq Biosciences Inc., Victoria BC CANADA, Catalog # SPC-684)

### Certificate Of Analysis

A 1:500 dilution of SPC-684 was sufficient for detection of RAB1B in 15 µg of Human HeLa Cell Lysates by ECL immunoblot analysis using goat anti-rabbit IgG:HRP as the secondary antibody.

## Biological Description

### Alternative Names

Ras-related protein Rab-1B Antibody, RAB1B Antibody

### Research Areas

Cell Signaling, Trafficking

### Cellular Localization

Cytoplasm, Cytoplasmic Side, Lipid-Anchor, Membrane, Preautophagosomal Structure Membrane

### Accession Number

NP\_112243.1

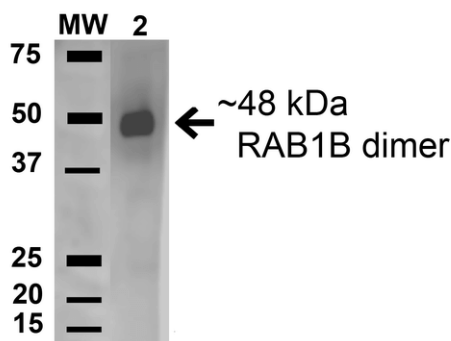
### Gene ID

81876

### Swiss Prot

Q9H0U4

## Product Images



Western blot analysis of Human HeLa and 293Trap cell lysates showing detection of 22.1 kDa RAB1B protein using Rabbit Anti-RAB1B Polyclonal Antibody (SPC-684). Lane 1: Molecular Weight Ladder (MW). Lane 2: Human HeLa and 293Trap cell lysates. Load: 15 µg . Block: 5% Skim Milk in 1X TBST. Primary Antibody: Rabbit Anti-RAB1B Polyclonal Antibody (SPC-684) at 1:1000 for 1 hour at RT. Secondary Antibody: Goat Anti-Rabbit HRP at 1:2000 for 60 min at RT. Color Development: ECL solution for 6 min in RT. Predicted/Observed Size: 22.1 kDa.

## Product Citations (0)

---

Currently there are no citations for this product.

## Reviews

---

There are no reviews yet.