



SZABO SCANDIC

Part of Europa Biosite

Produktinformation



Forschungsprodukte & Biochemikalien



Zellkultur & Verbrauchsmaterial



Diagnostik & molekulare Diagnostik



Laborgeräte & Service

Weitere Information auf den folgenden Seiten!
See the following pages for more information!



Lieferung & Zahlungsart

siehe unsere [Liefer- und Versandbedingungen](#)

Zuschläge

- Mindermengenzuschlag
- Trockeneiszuschlag
- Gefahrgutzuschlag
- Expressversand

SZABO-SCANDIC HandelsgmbH

Quellenstraße 110, A-1100 Wien

T. +43(0)1 489 3961-0

F. +43(0)1 489 3961-7

mail@szabo-scandic.com

www.szabo-scandic.com

[linkedin.com/company/szaboscandic](https://www.linkedin.com/company/szaboscandic) 

Anti-Beta Actin Antibody

Rabbit Anti-Human beta Actin Polyclonal
Catalog No. SPC-687



Discovery through partnership | Excellence through quality

Overview

Product Name

beta Actin Antibody

Description

Rabbit Anti-Human beta Actin Polyclonal

Species Reactivity

Human

Applications

WB, ICC/IF

Antibody Dilution

WB (1:1000); ICC/IF (1:100); optimal dilutions for assays should be determined by the user.

Host Species

Rabbit

Immunogen Species

Human

Immunogen

Synthetic peptide from the mid-protein range of human beta Actin

Concentration

1 mg/ml

Conjugates

Alkaline Phosphatase, APC, ATTO 390, ATTO 488, ATTO 565, ATTO 594, ATTO 633, ATTO 655, ATTO 680, ATTO 700, Biotin, FITC, HRP, PE/ATTO 594, PerCP, RPE, Streptavidin, Unconjugated

Properties

Storage Buffer

PBS, 50% glycerol, 0.09% sodium azide

Storage Temperature

-20°C

Shipping Temperature

Blue Ice or 4°C

Purification

Peptide Affinity Purified

Clonality

Polyclonal

Specificity

Predicted molecular weight at ~41.7kDa. A double band may be observed.

Cite This Product

Rabbit Anti-Human beta Actin Polyclonal (StressMarq Biosciences Inc., Victoria BC CANADA, Catalog # SPC-687)

Certificate Of Analysis

A 1:1000 dilution of SPC-687 was sufficient for detection of beta Actin on 293T Rapamycin-treated lysates using Goat anti-rabbit IgG:HRP as the secondary antibody.

Biological Description

Alternative Names

A X actin like protein Antibody, ACTB Antibody, ACTB_HUMAN Antibody, Actin Antibody, Actin cytoplasmic 1 Antibody, actin beta Antibody, Actx Antibody, Beta-actin Antibody, PS1TP5 binding protein 1 Antibody

Research Areas

Cell Signaling

Cellular Localization

Cytoplasm, Cytoskeleton

Accession Number

NP_001092.1

Gene ID

60

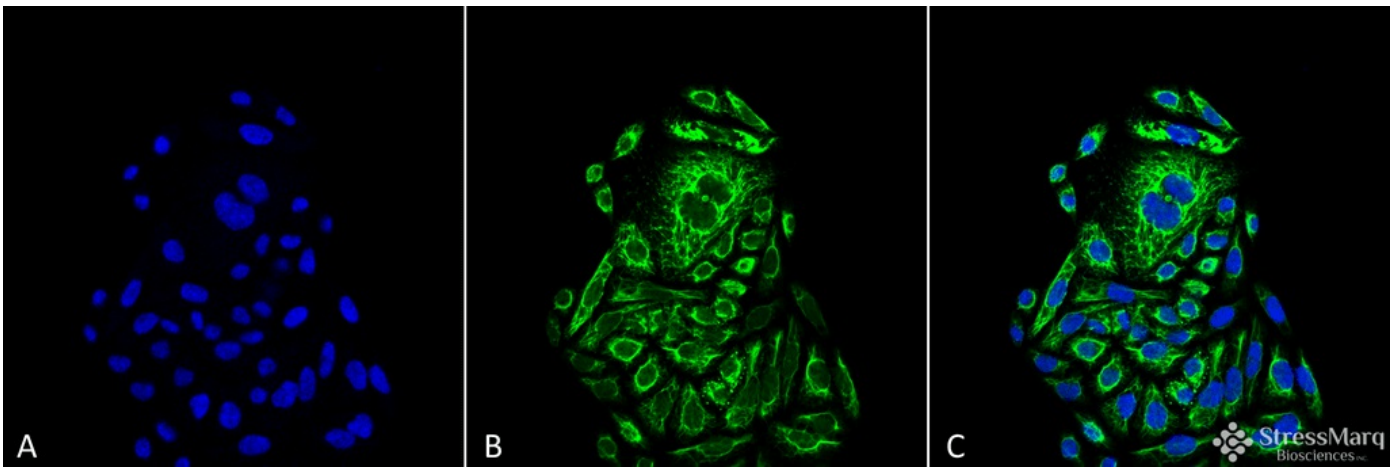
Swiss Prot

P60709

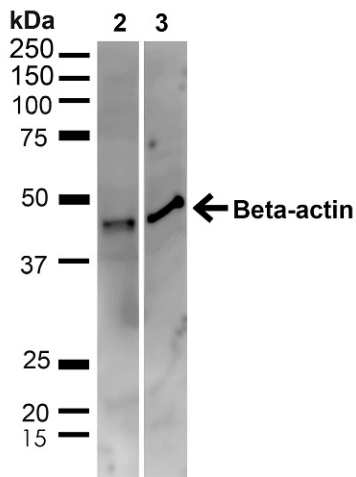
Scientific Background

Beta-actin is one of six different actin isoforms which have been identified in humans. This is one of the two nonmuscle cytoskeletal actins. Actins are highly conserved proteins that are involved in cell motility, structure and integrity.

Product Images



Immunocytochemistry/Immunofluorescence analysis using Rabbit Anti-Beta Actin Polyclonal Antibody (SPC-687). Tissue: Cervical Cancer cell line (HeLa). Species: Human. Fixation: 4% Formaldehyde for 15 min at RT. Primary Antibody: Rabbit Anti-Beta Actin Polyclonal Antibody (SPC-687) at 1:100 for 60 min at RT. Secondary Antibody: Goat Anti-Rabbit ATTO 488 at 1:100 for 60 min at RT. Counterstain: DAPI (blue) nuclear stain at 1:5000 for 5 min RT. Localization: Cytoplasm, Cytoskeleton. Magnification: 40X. (A) DAPI (blue) nuclear stain (B) Phalloidin Texas Red F-Actin stain (C) Beta Actin Antibody (D) Composite.



Western blot analysis of Human HeLa_293T showing detection of ~41.7kDa beta Actin protein using Rabbit Anti-beta Actin Polyclonal Antibody (SPC-687). Lane 1: MW Ladder. Lane 2: Human HeLa (20 µg). Lane 3: Human 293T (20 µg). Load: 20 µg. Block: 5% milk + TBST for 1 hour at RT. Primary Antibody: Rabbit Anti-beta Actin Polyclonal Antibody (SPC-687) at 1:1000 for 1 hour at RT. Secondary Antibody: Goat Anti-Rabbit: HRP at 1:2000 for 1 hour at RT. Color Development: TMB solution for 12 min at RT. Predicted/Observed Size: ~41.7kDa.

Product Citations (0)

Currently there are no citations for this product.

Reviews

There are no reviews yet.