



SZABO SCANDIC

Part of Europa Biosite

Produktinformation



Forschungsprodukte & Biochemikalien



Zellkultur & Verbrauchsmaterial



Diagnostik & molekulare Diagnostik



Laborgeräte & Service

Weitere Information auf den folgenden Seiten!
See the following pages for more information!



Lieferung & Zahlungsart

siehe unsere [Liefer- und Versandbedingungen](#)

Zuschläge

- Mindermengenzuschlag
- Trockeneiszuschlag
- Gefahrgutzuschlag
- Expressversand

SZABO-SCANDIC HandelsgmbH

Quellenstraße 110, A-1100 Wien

T. +43(0)1 489 3961-0

F. +43(0)1 489 3961-7

mail@szabo-scandic.com

www.szabo-scandic.com

[linkedin.com/company/szaboscandic](https://www.linkedin.com/company/szaboscandic) 

Anti-Alpha Tubulin Antibody

Rabbit Anti-Human alpha Tubulin Antibody Polyclonal
Catalog No. SPC-692



Discovery through partnership | Excellence through quality

Overview

Product Name

alpha Tubulin Antibody

Description

Rabbit Anti-Human alpha Tubulin Antibody Polyclonal

Species Reactivity

Human

Applications

WB

Antibody Dilution

WB (1:500); optimal dilutions for assays should be determined by the user.

Host Species

Rabbit

Immunogen Species

Human

Immunogen

Synthetic peptide of Human alpha-Tubulin

Concentration

1 mg/ml

Conjugates

Alkaline Phosphatase, APC, ATTO 390, ATTO 488, ATTO 565, ATTO 594, ATTO 633, ATTO 655, ATTO 680, ATTO 700, Biotin, FITC, HRP, Unconjugated

Properties

Storage Buffer

PBS, 50% glycerol, 0.09% sodium azide

Storage Temperature

-20°C

Shipping Temperature

Blue Ice or 4°C

Purification

Peptide Affinity Purified

Clonality

Polyclonal

Specificity

Detects ~50 kDa.

Cite This Product

Rabbit Anti-Human alpha Tubulin Antibody Polyclonal (StressMarq Biosciences Inc., Victoria BC CANADA, Catalog # SPC-692)

Certificate Of Analysis

A 1:500 dilution of SPC-692 was sufficient for detection of alpha-Tubulin in 15 µg of Human HeLa Cell Lysates by ECL immunoblot analysis using goat anti-rabbit IgG:HRP as the secondary antibody.

Biological Description

Alternative Names

Alpha-tubulin ubiquitous Antibody, Alpha tubulin ubiquitous Antibody, Tubulin alpha 1B chain Antibody, Tubulin alpha ubiquitous Antibody, Tubulin K-alpha-1 Antibody, TBA1B_HUMAN Antibody, K alpha 1 Antibody, Tubulin alpha ubiquitous chain Antibody, Tubulin alpha 1B Antibody, TUBA1B Antibody, Tubulin alpha-1B chain Antibody, Tubulin alpha-ubiquitous chain Antibody, Tubulin K alpha 1 Antibody

Cellular Localization

Cytoplasm, Cytoskeleton

Accession Number

NP_006073.2

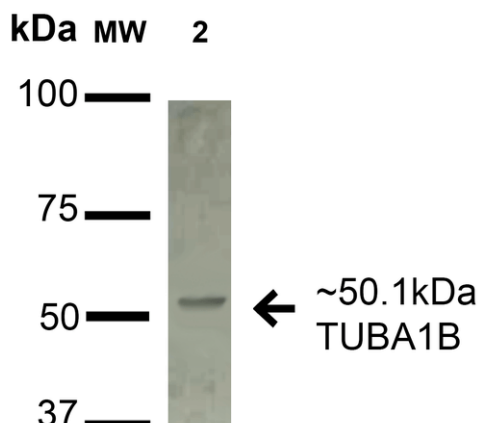
Gene ID

10376

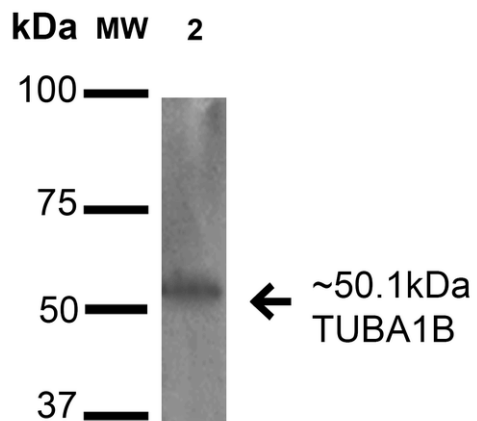
Swiss Prot

P68363

Product Images



Western blot analysis of Human A549 cell lysates showing detection of 50.1 kDa alpha Tubulin Antibody protein using Rabbit Anti-alpha Tubulin Antibody Polyclonal Antibody (SPC-692). Lane 1: Molecular Weight Ladder (MW). Lane 2: Human A549 cell lysates. Load: 15 µg. Block: 2% BSA and 2% Skim Milk in 1X TBST. Primary Antibody: Rabbit Anti-alpha Tubulin Antibody Polyclonal Antibody (SPC-692) at 1:1000 for 16 hours at 4°C. Secondary Antibody: Goat Anti-Rabbit IgG: HRP at 1:2000 for 60 min at RT. Color Development: ECL solution for 6 min in RT. Predicted/Observed Size: 50.1 kDa.



Product Citations (0)

Currently there are no citations for this product.

Reviews

There are no reviews yet.