



SZABO SCANDIC

Part of Europa Biosite

Produktinformation



Forschungsprodukte & Biochemikalien



Zellkultur & Verbrauchsmaterial



Diagnostik & molekulare Diagnostik



Laborgeräte & Service

Weitere Information auf den folgenden Seiten!
See the following pages for more information!



Lieferung & Zahlungsart

siehe unsere [Liefer- und Versandbedingungen](#)

Zuschläge

- Mindermengenzuschlag
- Trockeneiszuschlag
- Gefahrgutzuschlag
- Expressversand

SZABO-SCANDIC HandelsgmbH

Quellenstraße 110, A-1100 Wien

T. +43(0)1 489 3961-0

F. +43(0)1 489 3961-7

mail@szabo-scandic.com

www.szabo-scandic.com

[linkedin.com/company/szaboscandic](https://www.linkedin.com/company/szaboscandic) 

Anti-GLUT2 Antibody

Rabbit Anti-Human GLUT2 Polyclonal
Catalog No. SPC-697



Discovery through partnership | Excellence through quality

Overview

Product Name

GLUT2 Antibody

Description

Rabbit Anti-Human GLUT2 Polyclonal

Species Reactivity

Human, Rat

Applications

WB, ICC/IF

Antibody Dilution

WB (1:1000); ICC/IF (1:100); optimal dilutions for assays should be determined by the user.

Host Species

Rabbit

Immunogen Species

Human

Immunogen

Synthetic peptide from the C-terminal of human GLUT2

Concentration

1 mg/ml

Conjugates

Alkaline Phosphatase, APC, ATTO 390, ATTO 488, ATTO 565, ATTO 594, ATTO 633, ATTO 655, ATTO 680, ATTO 700, Biotin, FITC, HRP, PE/ATTO 594, PerCP, RPE, Streptavidin, Unconjugated

Properties

Storage Buffer

PBS, 50% glycerol, 0.09% sodium azide

Storage Temperature

-20°C

Shipping Temperature

Blue Ice or 4°C

Purification

Peptide Affinity Purified

Clonality

Polyclonal

Specificity

Predicted molecular weight at ~57.5kDa. Observed molecular weight at 60-70kDa and 38-45kDa.

Cite This Product

Rabbit Anti-Human GLUT2 Polyclonal (StressMarq Biosciences Inc., Victoria BC CANADA, Catalog # SPC-697)

Certificate Of Analysis

A 1:1000 dilution of SPC-697 was sufficient for detection of GLUT2 on 293T Rapamycin-treated lysates using Goat anti-rabbit IgG:HRP as the secondary antibody.

Biological Description

Alternative Names

Glucose Transporter 2 Antibody, Glucose Transporter GLUT2 Antibody, BLUT-2 Antibody, GTR_Human Antibody, SLC2a2 Antibody, Solute Carrier Family 2 (facilitated glucose transporter) member 2 Antibody

Research Areas

Cancer, Cell Signaling, Trafficking

Cellular Localization

Membrane

Accession Number

NP_000331.1

Gene ID

6514

Swiss Prot

P11168

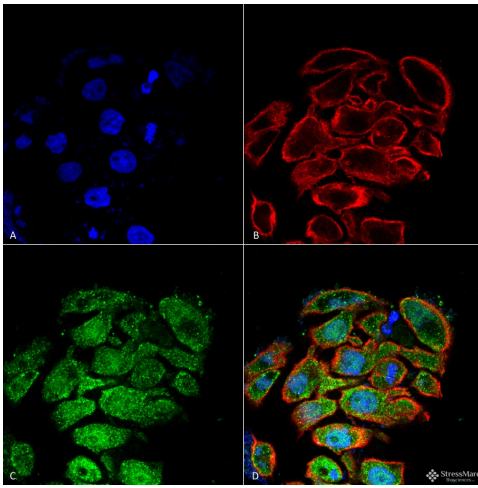
Scientific Background

Glucose transporter 2 (GLUT2) also known as solute carrier family 2 (facilitated glucose transporter), member 2 (SLC2A2) is a transmembrane carrier protein that enables protein facilitated glucose movement across cell membranes. It is the principal transporter for transfer of glucose between liver and blood, and has a role in renal glucose reabsorption (1). Mutations in SLC2A2 lead to Fanconi-Bickel syndrome (FBS), which results in hepatorenal glycogen accumulation, proximal renal tubular dysfunction, and impaired utilization of glucose and galactose. Recent studies have shown that mutations in SLC2A2 can cause neonatal diabetes, and therefore may contribute to human insulin secretion (2). Novel SLC2A2 mutations have also been discovered and are being investigated to determine their roles in FBS as well (3).

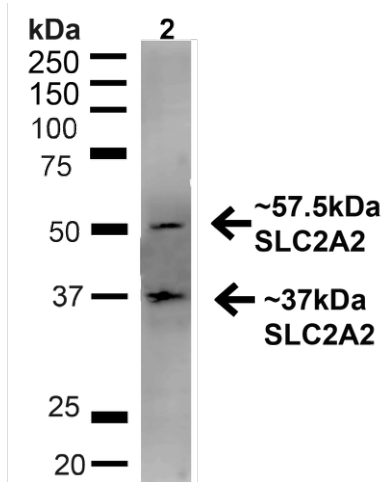
References

1. Kellett G.L., Brot-Laroche E. (2005) *Diabetes*. 54(10): 3056-3062.
 2. Sansbury F.H., et al. (2012) *Diabetologia*. 55(9): 2381-2385.
 3. Su Z., et al. (2011) *J Periatr Endocrinol Metab*. 24(9-10): 749-753.
-

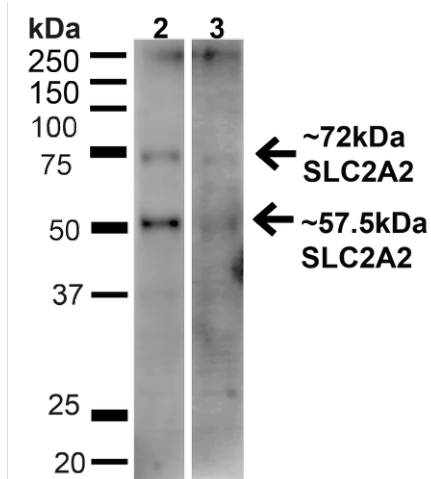
Product Images



Immunocytochemistry/Immunofluorescence analysis using Rabbit Anti-GLUT2 Polyclonal Antibody (SPC-697). Tissue: Colon cancer cell line (HT-29). Species: Human. Fixation: 4% Formaldehyde for 15 min at RT. Primary Antibody: Rabbit Anti-GLUT2 Polyclonal Antibody (SPC-697) at 1:100 for 60 min at RT. Secondary Antibody: Goat Anti-Rabbit ATTO 488 at 1:100 for 60 min at RT. Counterstain: Phalloidin Texas Red F-Actin stain; DAPI (blue) nuclear stain at 1:1000, 1:5000 for 60min RT, 5min RT. Localization: Cytoplasm, membrane. Magnification: 60X. (A) DAPI (blue) nuclear stain (B) Phalloidin Texas Red F-Actin stain (C) GLUT2 Antibody (D) Composite.



Western blot analysis of Rat Liver showing detection of ~57.5kDa GLUT2 protein using Rabbit Anti-GLUT2 Polyclonal Antibody (SPC-697). Lane 1: MW Ladder. Lane 2: Rat Liver (20 µg). Load: 20 µg. Block: 5% milk + TBST for 1 hour at RT. Primary Antibody: Rabbit Anti-GLUT2 Polyclonal Antibody (SPC-697) at 1:1000 for 1 hour at RT. Secondary Antibody: Goat Anti-Rabbit: HRP at 1:2000 for 1 hour at RT. Color Development: TMB solution for 12 min at RT. Predicted/Observed Size: ~57.5kDa. Other Band(s): ~37kDa.



Western blot analysis of Human HeLa_293T showing detection of ~57.5kDa GLUT2 protein using Rabbit Anti-GLUT2 Polyclonal Antibody (SPC-697). Lane 1: MW Ladder. Lane 2: Human HeLa (20 µg). Lane 3: Human 293T (20 µg). Load: 20 µg. Block: 5% milk + TBST for 1 hour at RT. Primary Antibody: Rabbit Anti-GLUT2 Polyclonal Antibody (SPC-697) at 1:1000 for 1 hour at RT. Secondary Antibody: Goat Anti-Rabbit: HRP at 1:2000 for 1 hour at RT. Color Development: TMB solution for 12 min at RT. Predicted/Observed Size: ~57.5kDa. Other Band(s): ~72kDa.

Product Citations (0)

Currently there are no citations for this product.

Reviews

There are no reviews yet.