



SZABO SCANDIC

Part of Europa Biosite

Produktinformation



Forschungsprodukte & Biochemikalien



Zellkultur & Verbrauchsmaterial



Diagnostik & molekulare Diagnostik



Laborgeräte & Service

Weitere Information auf den folgenden Seiten!
See the following pages for more information!



Lieferung & Zahlungsart

siehe unsere [Liefer- und Versandbedingungen](#)

Zuschläge

- Mindermengenzuschlag
- Trockeneiszuschlag
- Gefahrgutzuschlag
- Expressversand

SZABO-SCANDIC HandelsgmbH

Quellenstraße 110, A-1100 Wien

T. +43(0)1 489 3961-0

F. +43(0)1 489 3961-7

mail@szabo-scandic.com

www.szabo-scandic.com

[linkedin.com/company/szaboscandic](https://www.linkedin.com/company/szaboscandic) 

Anti-Cyclooxygenase 1 Antibody

Rabbit Anti-Human Cyclooxygenase 1 Polyclonal
Catalog No. SPC-707



Discovery through partnership | Excellence through quality

Overview

Product Name

Cyclooxygenase 1 Antibody

Description

Rabbit Anti-Human Cyclooxygenase 1 Polyclonal

Species Reactivity

Human, Mouse, Rat

Applications

WB

Antibody Dilution

WB (1:500); optimal dilutions for assays should be determined by the user.

Host Species

Rabbit

Immunogen Species

Human

Immunogen

Synthetic peptide of Human Cyclooxygenase

Concentration

1 mg/ml

Conjugates

Alkaline Phosphatase, APC, ATTO 390, ATTO 488, ATTO 565, ATTO 594, ATTO 633, ATTO 655, ATTO 680, ATTO 700, Biotin, FITC, HRP, PE/ATTO 594, PerCP, RPE, Streptavidin, Unconjugated

Properties

Storage Buffer

PBS, 50% glycerol, 0.09% sodium azide

Storage Temperature

-20°C

Shipping Temperature

Blue Ice or 4°C

Purification

Peptide Affinity Purified

Clonality

Polyclonal

Specificity

Detects ~75 kDa.

Cite This Product

Rabbit Anti-Human Cyclooxygenase 1 Polyclonal (StressMarq Biosciences Inc., Victoria BC CANADA, Catalog # SPC-707)

Certificate Of Analysis

A 1:500 dilution of SPC-707 was sufficient for detection of Cyclooxygenase in 15 µg of Human HeLa Cell Lysates by ECL immunoblot analysis using goat anti-rabbit IgG:HRP as the secondary antibody.

Biological Description

Alternative Names

EC:1.14.99.1 Antibody, PGHS1 Antibody, Prostaglandin G/H synthase 1 Antibody, PGHS-1 Antibody, Prostaglandin H2 synthase 1 Antibody, Prostaglandin-endoperoxide synthase 1 (prostaglandin G/H synthase and cyclooxygenase) Antibody, PHS 1 Antibody, EC 1.14.99.1 Antibody, Prostaglandin-endoperoxide synthase 1 Antibody, COX 3 Antibody, PTGS1 Antibody, PGH1_HUMAN Antibody, COX-1 Antibody, PGG/HS Antibody, PTGHS Antibody, Cox3 Antibody, PGH synthase 1 Antibody, Cyclooxygenase-1 Antibody, PHS1 Antibody, Cyclooxygenase 1 Antibody, Cyclooxygenase 3, included Antibody, Partial COX1 proteins, included Antibody, COX 1 Antibody, COX1 Antibody, PCOX1 Antibody

Cellular Localization

Endoplasmic reticulum membrane, Microsome Membrane, Peripheral membrane protein

Accession Number

NP_000953.2

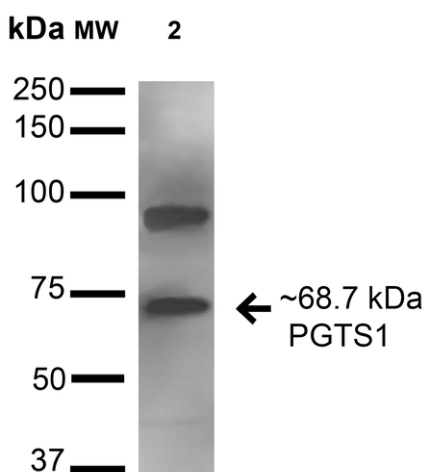
Gene ID

5742

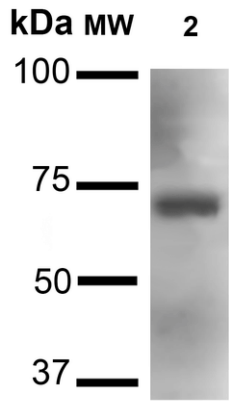
Swiss Prot

P23219

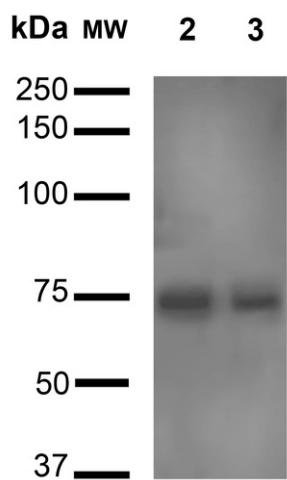
Product Images



Western blot analysis of Human HeLa and 293Trap cell lysates showing detection of 68.7 kDa Cyclooxygenase 1 protein using Rabbit Anti-Cyclooxygenase 1 Polyclonal Antibody (SPC-707). Lane 1: Molecular Weight Ladder (MW). Lane 2: Human HeLa and 293Trap cell lysates. Load: 15 µg . Block: 2% BSA and 2% Skim Milk in 1X TBST. Primary Antibody: Rabbit Anti-Cyclooxygenase 1 Polyclonal Antibody (SPC-707) at 1:1000 for 16 hours at 4°C. Secondary Antibody: Goat Anti-Rabbit HRP at 1:2000 for 60 min at RT. Color Development: ECL solution for 6 min in RT. Predicted/Observed Size: 68.7 kDa. Other Band(s): 25 kDa in all lysates, 100 kDa in Mouse Kidney, 37 and 55 kDa in 293Trap.



Western blot analysis of Mouse Kidney cell lysates showing detection of 68.7 kDa Cyclooxygenase 1 protein using Rabbit Anti-Cyclooxygenase 1 Polyclonal Antibody (SPC-707). Lane 1: Molecular Weight Ladder (MW). Lane 2: Mouse Kidney cell lysates. Load: 15 μ g. Block: 2% BSA and 2% Skim Milk in 1X TBST. Primary Antibody: Rabbit Anti-Cyclooxygenase 1 Polyclonal Antibody (SPC-707) at 1:1000 for 16 hours at 4°C. Secondary Antibody: Goat Anti-Rabbit HRP at 1:2000 for 60 min at RT. Color Development: ECL solution for 6 min in RT. Predicted/Observed Size: 68.7 kDa. Other Band(s): 25 kDa in all lysates, 100 kDa in Mouse Kidney, 37 and 55 kDa in 293Trap.



Western blot analysis of Rat Brain cell lysates showing detection of 68.7 kDa Cyclooxygenase 1 protein using Rabbit Anti-Cyclooxygenase 1 Polyclonal Antibody (SPC-707). Lane 1: Molecular Weight Ladder (MW). Lane 2: Rat Brain cell lysates. Lane 3: Another sample. Load: 15 μ g. Block: 2% BSA and 2% Skim Milk in 1X TBST. Primary Antibody: Rabbit Anti-Cyclooxygenase 1 Polyclonal Antibody (SPC-707) at 1:1000 for 16 hours at 4°C. Secondary Antibody: Goat Anti-Rabbit HRP at 1:2000 for 60 min at RT. Color Development: ECL solution for 6 min in RT. Predicted/Observed Size: 68.7 kDa. Other Band(s): 25 kDa in all lysates, 100 kDa in Mouse Kidney, 37 and 55 kDa in 293Trap.

Product Citations (0)

Currently there are no citations for this product.

Reviews

There are no reviews yet.